

# Artist Collection SS24



# KostaBoda







# KostaBoda

# Artist

# Collection

Kosta Boda Artist Collection is a curated selection of works by celebrated artists and designers, representing contemporary creativity, superior craftsmanship and Swedish glass tradition. All objects are hand made by master craftsmen at the historic Kosta Glassworks, founded in 1742.

You're welcome to visit us in Kosta and at [kostaboda.com/artist-collection](https://kostaboda.com/artist-collection)





NINKO

M



A person wearing a dark, heavy jacket is crouching on a grey, textured concrete floor. The person's head is bowed, and their hands are near the ground. In the bottom left corner, a bright yellow object, possibly a hard hat or a piece of equipment, is partially visible. The overall scene suggests a moment of rest or a break in a work environment.

# MADE OSTA



OBJE

NEWS

EFFECTS



# Mother of Pearl

Design Åsa Jungnelius



**NEW**





■ **Mother of pearl pink, AJ AC-24**  
Art. nr. 7480047  
H 115 mm W 175 mm L 155 mm W 1.5 kg

■ **Mother of pearl blue, AJ AC-24**  
Art. nr. 7480048  
H 115 mm W 175 mm L 155 mm W 1.5 kg

■ **Mother of pearl sand, AJ AC-24**  
Art. nr. 7480049  
H 115 mm W 175 mm L 155 mm W 1.5 kg



# Snippan

Design Åsa Jungnelius



**NEW**





■ **Snippan platinum, ÅJ AC-24**  
Art. nr. 7480050  
H 50 mm W 88 mm L 118 mm W 0.7 kg



# Annual Brains

Design Bertil Vallien

**NEW**





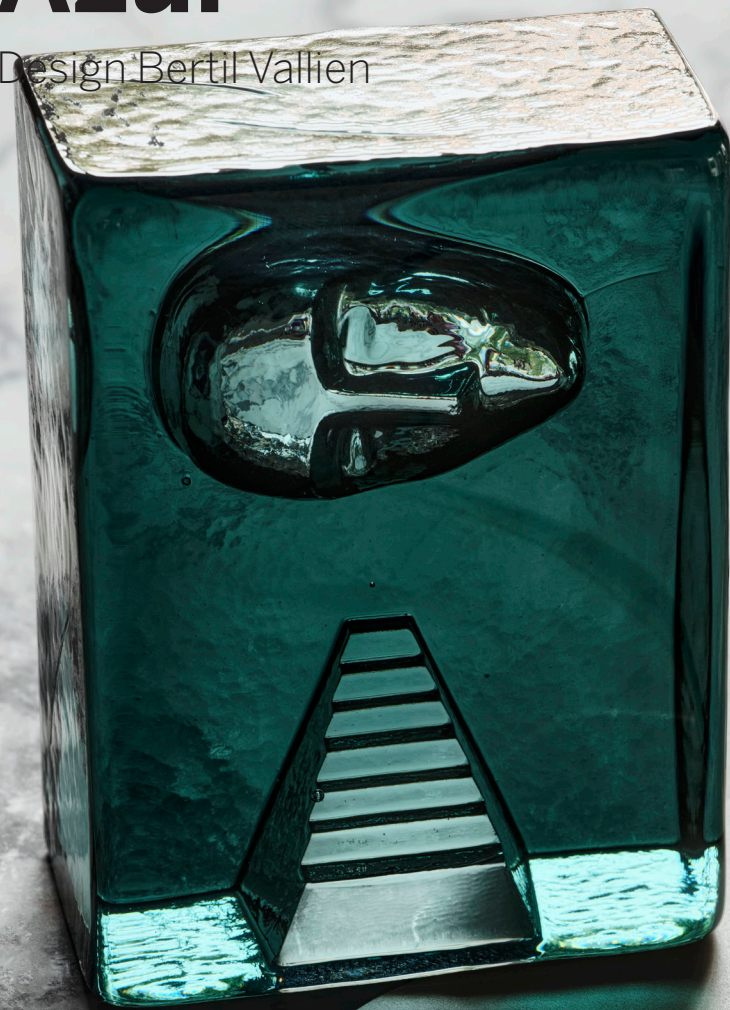


■ **Annual Brains 2024, BV AC-24**  
Art. nr. 7520218  
H 50 mm W 85 mm L 70 mm W 0.5 kg



# Azur

Design Bertil Vallien



**NEW**





■ **Azur Stairs Petrol BV AC-24**  
Art. nr. 7520214  
H 150 mm W 65 mm L 110 mm W 2.3 kg

■ **Azur Moon petrol blue BV AC-24**  
Art. nr. 7520215  
H 150 mm W 65 mm L 110 mm W 2.3 kg

■ **Azur Man petrol blue BV AC-24**  
Art. nr. 7520216  
H 150 mm W 65 mm L 110 mm W 2.3 kg

■ **Azur Frost petrol blue BV AC-24**  
Art. nr. 7520217  
H 150 mm W 65 mm L 110 mm W 2.3 kg



# ARTISTS

Kosta Boda Artist Collection is colorful, intelligent, and occasionally limitless. Our best known and most recognized artists work side by side with new designers and young artists.









# EFFICIENT





The collections are united by the love for glass and curiosity about the nearly endless possibilities it offers. Classic gems, elegant objects, narratives, and political commentaries result in collections that constitute decades of artistry.







■ “A lot of this is about the joy of being back in Kosta, about my love of the glassworks, the craftspeople, history, and tradition.”

# Åsa Jungnelius

Åsa Jungnelius' breakthrough arrived in 2004 with her degree project for Konstfack (University of Arts, Crafts and Design, Stockholm Sweden), entitled “I like your hairstyle!”

In the degree project, she presented a surrealist shopping scene with several pieces that have subsequently become iconic – if we may use that tired expression – such as her oversized lipstick, and “Snippan”, or “Vagina”, the much-discussed glass sculpture that contributed to coining the Swedish term.

Snippan was outside of the shop, a subject looking in through glass, and seeing itself and its attributes in a mirror,” says Jungnelius. “I've always wanted to create overall spatial experiences and to search for new perspectives. Based on that, I've occasionally developed miniatures that are available for people's interiors.”

Jungnelius – a skilled glassblower herself – has become established since then as one of the most influential pioneers in a new movement of Swedish craftsmanship-driven art. She has become particularly known for her bold approach to playing with various feminine attributes and symbols. Her

work makes a strong, at times obtrusively cute, and sometimes aggressively feminine impression. Many of her works are built on what she calls “the power of negative space” – such as the massive installation Snäckan, The Shell, in the brand new Hagastaden subway station, which opens in Stockholm in 2026.

Åsa Jungnelius was born and raised in Fisksätra in Saltsjöbaden, outside of Stockholm. She lives and works in Månsamåla outside of Åfors, where she previously shared the glassworks with Ulrica Hydman Vallien, her mentor and a source of inspiration. She has been tied to Kosta Boda since 2007.



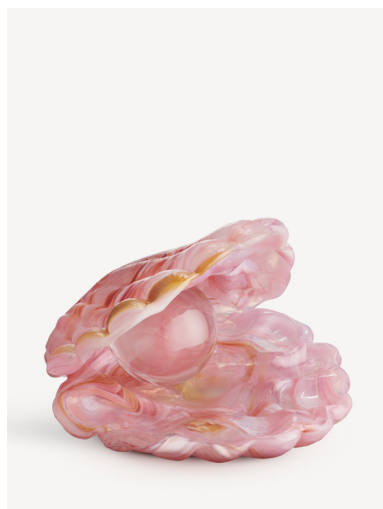
NEW





# Mother of Pearl

Design Åsa Jungnelius



**Mother of Pearl pink, ÅJ AC-24**

Art. nr. 7480047

H 115 mm W 175 mm L 155 mm W 1.5 kg



**Mother of Pearl blue, ÅJ AC-24**

Art. nr. 7480048

H 115 mm W 175 mm L 155 mm W 1.5 kg



**Mother of Pearl sand, ÅJ AC-24**

Art. nr. 7480049

H 115 mm W 175 mm L 155 mm W 1.5 kg



**NEW**







**Snippan platinum, ÅJ AC-24**

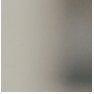
Art. nr. 7480050

H 50 mm W 88 mm L 118 mm W 0.7 kg









“For me, there is something magical about glass. With its sparkling and transparent character, it differs from other materials that I use to create. The raw, heavy feel of ceramics and bronze leads to more melancholy narratives, while right now, glass is drawing me more toward something romantic, toward happy children’s stories – like ice or crystal that you can control.”

# Ellen Ehk Åkesson

With Småland as a base, Ellen has exhibited all over the world. Her work is represented in galleries in Stockholm, Paris, and elsewhere in Europe, as well as in many collections in Asia, where her work is shown regularly.

From Ellen Ehk Åkesson’s earliest childhood memories, she has been deeply fascinated by, and has studied in detail all the patterns, color palettes and brilliant interacting plant systems of the forest. “Caves, giant boulders and crooked old trees are like extras in my games,” as she puts it. “I was also frequently in touch with older relatives and others – through them, I had access to all the stories and tales of the forest.”

She has always been particularly captivated by mushrooms, which are a continuous source of inspiration in her work – this mystical life form, neither plant nor animal, which is utterly essential to the organization and decomposition of life. Ellen Ehk Åkesson studied ceramics at the School of Design and Crafts at the University of Gothenburg (HDK) in the early 2000s.

Ellen was awarded the first Ulrica Hydman Vallien scholarship in 2019. The award included a generous amount of time in the studio at Kosta Glassworks, where she could experiment with glass as a new primary material in her art.

“It was an incredible luxury to have time to freely experiment like that, for a long time, without pressure. I incorporated elements from ceramics, different finishes and shapes, and explored how the qualities of glass changed the look. At first, I was frustrated by not being able to touch the glass, given how accustomed I was to do everything myself with my hands. Then I found a technique in which I filled wooden molds with clay and sculpted negative molds. This has worked brilliantly, and it’s enabled me to size up the format and control the shape. I am only just beginning to explore the possibilities of glass.”

Ellen was born in Småland, where she still lives today – now with her family in Nybro, in the heart of the Kingdom of Crystal.







# Berry Tales

Design Ellen Ehk Åkesson

Berry Tales are Ellen Ehk Åkesson's stories of bubbling, bulbous berries plucked straight from a mysterious forest. This item from Kosta Boda Artist Collection is mouth-blown at Kosta Glassworks and the berry's shiny finish is the result of being heated with a blowtorch.

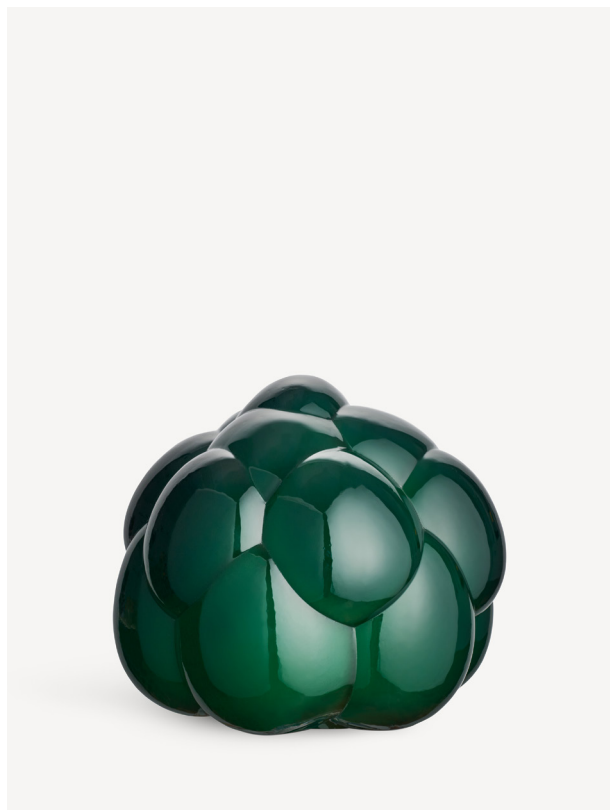


**Berry Tales ruby, EEÅ AC-21** Art. nr. 7770001 | H165 mm W170 mm L170 mm W1.8 kg



# Berry Tales

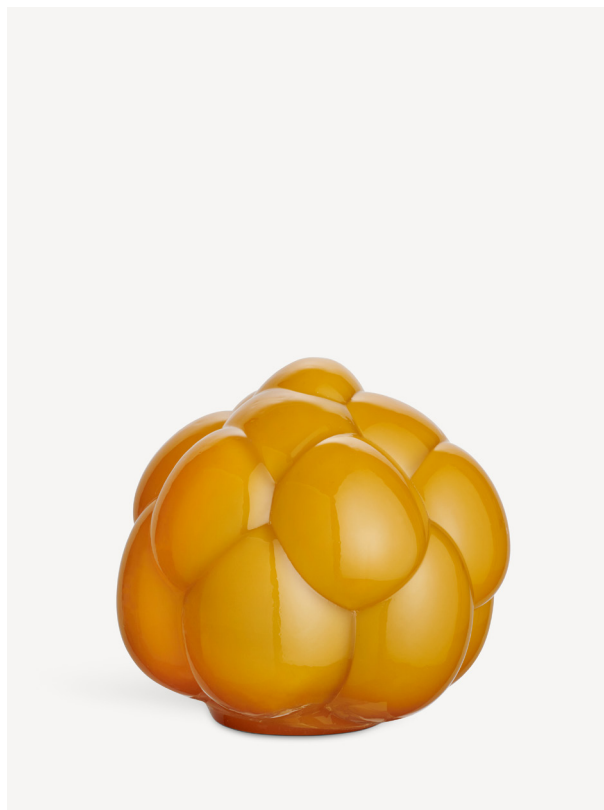
Design Ellen Ehk Åkesson



**Berry Tales emerald, EEÅ AC-21**

Art. nr. 7770002

H 160 mm W 170 mm L 170 mm W 1.8 kg



**Berry Tales amber, EEÅ AC-21**

Art. nr. 7770003

H 160 mm W 170 mm L 170 mm W 2.0 kg

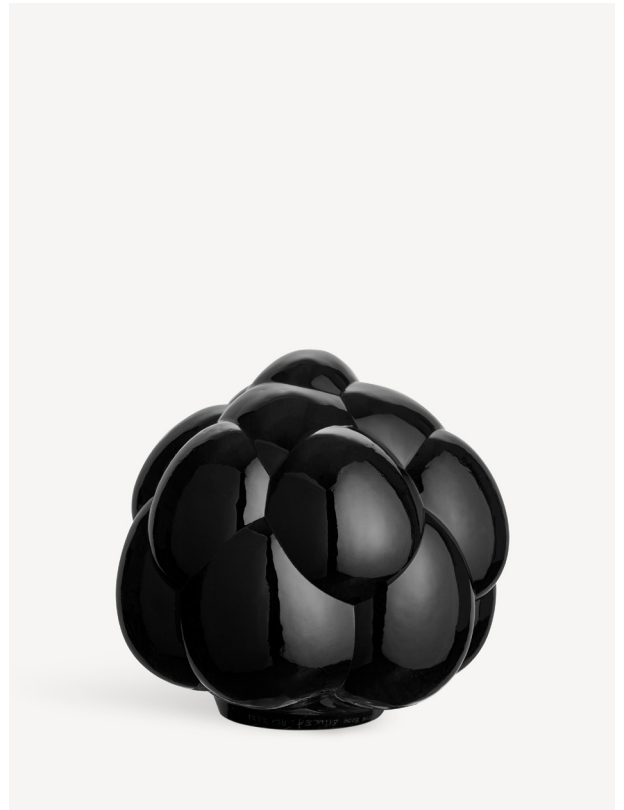




**Berry Tales white frosted, EEÅ AC-21**

Art. nr. 7770004

H 160 mm W 170 mm L 170 mm W 2.0 kg



**Berry Tales black, EEÅ AC-21**

Art. nr. 7770005

H 160 mm W 170 mm L 170 mm W 2.0 kg







■ “Nature has always been important to me,” says Lena Bergström. Norrland has so much sky – gray, white, light blue, with long, graphic shadows in wintertime. But stumps in the forest can also be buildings in the city. Tracks in the snow can be textures on silk. Nature and cities, organic and sharp qualities, timelessness and today, nerves and elegance – the contrasts between these poles all add tension to my design.”

# Lena Bergström

Lena Bergström was born and raised in northerly Umeå, fondly nicknamed the City of Birches, a heritage that is clearly present in her designs. Birch and Nordic steel are among her favorite materials alongside glass, linen and wool. Her first dream was to become an architect.

Instead, she moved to Stockholm where she attended basic art school and later the textile department at Konstfack (University of Arts, Crafts and Design, Stockholm Sweden). As a textile designer, she had an early breakthrough, which led to her being recruited as a designer for Orrefors in 1994.

Her interest in fashion, architecture and other contemporary, creative expressions is a source from which Bergström has constantly drawn inspiration. Another is the love for tradition, craftsmanship, and the signature landscape of where she grew up. “Nature has always been important to me,” says Bergström. “In the north of Sweden, there is a lot of sky – gray, white, light blue, with long, graphic shadows. But stumps in the forest also share traits with buildings in the city, tracks in the snow can be seen as structures in silk fabric. Nature and urbanity, the organic and the inanimate – the contrasts between these poles form force fields in my work.”

During her long, successful and award-winning career, Lena Bergström has staged a large number of notable exhibitions, in Sweden and internationally. Her public design assignments include decorations for the Swedish embassies in Tokyo and Bucharest, the reception desk for the Clarion Post hotel in Gothenburg and the Crystal bar in Orrefors.

Lena Bergström’s glass art is represented in collections at museums such as the National Museum in Stockholm, the Röhsska Museum of Design and Craft in Gothenburg, the National Museum in Oslo, the Cleveland Art Museum in the US and the Victoria and Albert Museum in London.







# Mino

Design Lena Bergström

Mino hand-blown at the Kosta glassworks, presents a base onto which glass balls are mounted before getting cut up into blossoming flowers. "I see these anemones as wild glass flowers or, for that matter, unruly curly hair", says Bergström. "I take an interest in things that are thrown away, disposed, disregarded, and belittled, like the chipped fragments in glass production. I thought I could create a minimalistic anemone by assembling such fragments. In fact, it resulted in a chaos of fragments, the genie was out of the bottle, like a graphic ball, crazy and wonderful."



**Mino pink LB AC-23**

Art. nr. 7630082

H 230 mm W 140 mm L 140 mm W 1.5 kg



**Mino spring green LB AC-23**

Art. nr. 7630083

H 230 mm W 140 mm L 140 mm W 1.5 kg

# Mino

Design Lena Bergström



**Mino pale blue LB AC-23**

Art. nr. 7630084

H 260 mm W 110 mm L 110 mm W 1.5 kg



**Mino ice grey LB AC-23**

Art. nr. 7630085

H 230 mm W 140 mm L 140 mm W 1.5 kg

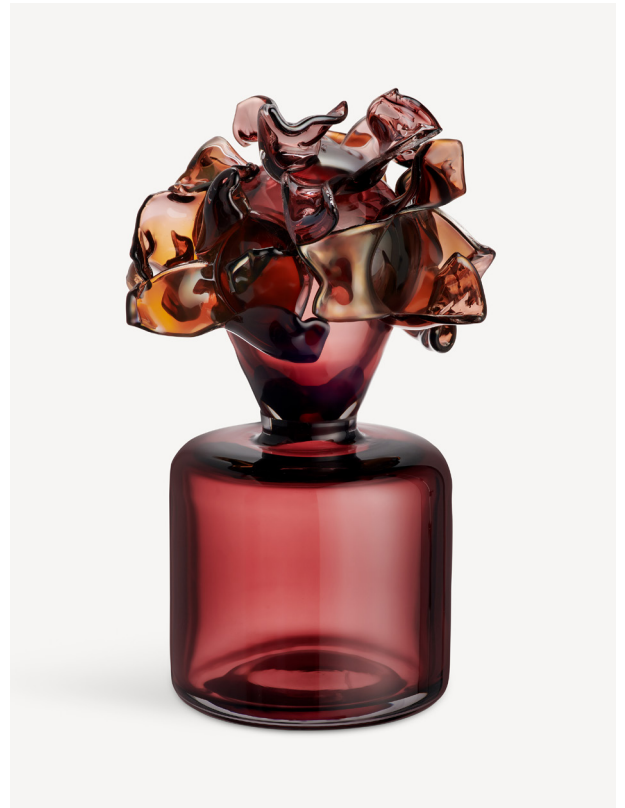




**Mino amber LB AC-23**

Art. nr. 7630086

H 260 mm W 110 mm L 110 mm W 1.5 kg



**Mino plum LB AC-23**

Art. nr. 7630087

H 260 mm W 110 mm L 110 mm W 1.5 kg









“Blue has a continuous presence in my work and my design,” says Erika. “Orange and red are the sun, of course. The colors are inspired by the ocean throughout the day.”

# Erika Lagerbielke

Erika Lagerbielke was born and raised in the same Stockholm, in a family with artistic heritage. Her mother was a textile designer, and Dean of Konstfack (University of Art, Crafts and Design, Stockholm, Sweden), her father a graphic designer.

Erika tried glassblowing during her studies but decided to leave the craft to the craftsmen and focus on design. Her sensitive, elegant style and natural feeling for glass and color made Orrefors recruit her as a designer while still in school, in 1982.

“The eighties are the eighties and it was very colorful”, says Erika Lagerbielke. “I was recruited for my sense of color, just twenty-two years old. I was young and cocky, but also humble and insecure. It was an exciting time — to be part of a movement when design conquered a new position. Orrefors was part of this wave, with strong Gallery collections and glamorous openings in the NK department store in Stockholm, for which customers queued up. It was a fantastic start.”

Erika Lagerbielke has held acclaimed exhibitions of both her utility and art glass in Sweden and around the world over the years. Her designs are multi-award-winning, and she has garnered particular praise for her approach to combining clear and colored glass. She is famous for her work with the meeting of wine and glass, which she explored in depth. Her

breakthrough collection, *Intermezzo* from the mid-80s, with its encased drop of blue glass, is generally recognized as an innovation and a milestone in glass design.

In 2021, Erika Lagerbielke made a grand comeback in art glass with her exhibition *En Blå Planet* (Blue Planet) in Galleri Glas in Stockholm, a great success. The new series, which Lagerbielke has elaborated for the show in Kosta, builds on her lifelong love of the sea. “Water and glass are closely related. Glass is an under-cooled liquid. I’ve always loved the sea and reflected over oceans as a jeopardized, vital resource. People have really responded to the exhibition. Some said it made them happy, others that it reinforced their climate anxiety. It’s been very emotional, as art should be.”







# Iris

## Design Erika Lagerbielke

The ocean, water, and glass – all form important and fond childhood memories for Erika Lagerbielke. Lagerbielke's memories of swimming and diving, personal reflection, movement, light plays, and optical phenomena, have been integral to her glass art throughout a long stellar career. Among glass lovers in Sweden and internationally, Erika Lagerbielke is recognized and respected for her sensitive elegant expression as well as having an eye for color. "I enjoy using multiple tones of color in my glass art, frequently combining warm and cold notes", Erika Lagerbielke says.

"Iris is a collection of miniature vases, covering the full color spectrum of the rainbow, stemming from unique works included in my 'Blue Planet' exhibition at Galleri Glas in Stockholm and at Kosta Boda Art Gallery in 2022", Erika Lagerbielke recounts. "The pieces are small enough to hold in your hand or to arrange in groups. I have combined frosted and transparent surfaces that interact beautifully. The name Iris is of course that of the rainbow goddess in Greek mythology." The collection is part of Kosta Boda Artist Collection.





# Iris

Design Erika Lagerbielke



**Iris vase blue, EL AC-23**

Art. nr. 7600053

H 127 mm W 90 mm L 90 mm W 0.3 kg



**Iris vase blue frosted, EL AC-23**

Art. nr. 7600054

H 127 mm W 90 mm L 90 mm W 0.3 kg



**Iris vase blue/green, EL AC-23**

Art. nr. 7600055

H 127 mm W 90 mm L 90 mm W 0.3 kg



**Iris vase blue/green frosted, EL AC-23**

Art. nr. 7600056

H 127 mm W 90 mm L 90 mm W 0.3 kg





**Iris vase pink/amber, EL AC-23**

Art. nr. 7600057

H 127 mm W 90 mm L 90 mm W 0.3 kg

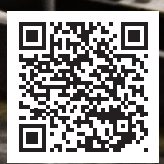


**Iris vase pink/amber frosted, EL AC-23**

Art. nr. 7600058

H 129 mm W 90 mm L 90 mm W 0.3 kg







■ “I like when the glass has a content — when it can be alluring from one angle, but then something else when you turn it or move in the room”, Göran Wärff said. “There are endless options in the glassworks. Then when the piece is cold and finished, a new world awaits to explore in the grindery.”

# Göran Wärff

Göran Wärff (1933-2022) was a doyen of Kosta Boda and the entire Kingdom of Crystal – a legend who was connected to our history and who was part of shaping the Swedish glass tradition for more than 60 years.

Göran Wärff was born and raised in Slite on the island of Gotland, where he as a boy set out to sea with the sea pilot. After living partly abroad, in Australia and England, he returned to the island in the latter part of his life, where he lived with his wife Lena in Hau farm by scenic Ar stone beach on the island's northwestern cape. The Gotland scenery animated Göran's glass art, in which the sea was always the main source of inspiration. The endlessness of the ocean is reflected in his glass. Movement inside the glass, the optical effects, are the core in Göran's glass art. He worked with the body of the glass as no one else today. He never added anything, always allowing the glass to live its own life with the colors.

Göran Wärff started working as a designer for Pukeberg in 1958, where his design talent was discovered when he worked as an apprentice while studying architecture in Germany. “That became my university”, said Göran. “I became interested in the technical aspects of the craft. It was there that I could experiment with various techniques until I found that primal soul of the glass.”

From Pukeberg, Wärff was recruited to Kosta Boda, where he worked from 1964. At the time, the company's artistic leader of the time was legend Vicke Lindstrand. “But his ideals were too traditional for my taste”, Göran said. “The kinship with the Boda glassworks and Erik Höglund expressed something different.”

The constant presence of nature in Göran Wärff's glass art is an obvious quality. “But it's easy to say nature, and it's not always obvious”, Göran said. “It's interesting with the parallel processes of growth and decay. The sea and the light as well of course, it's there.”

A hallmark for Göran Wärff's glass art is that his objects frequently offer additional optic experiences not obvious in the first impression, like light phenomenons or treasures glimmering from the depths of the sea.





# Mirage

Design Göran Wärff

Mirage by Göran Wärff is a decorative object, as well as a vase whose warm colors are reflected as spectra within the soft, curved shapes. This object from Kosta Boda Artist Collection is mouth-blown at Kosta Glassworks using an angled pipe to create the curved shape.

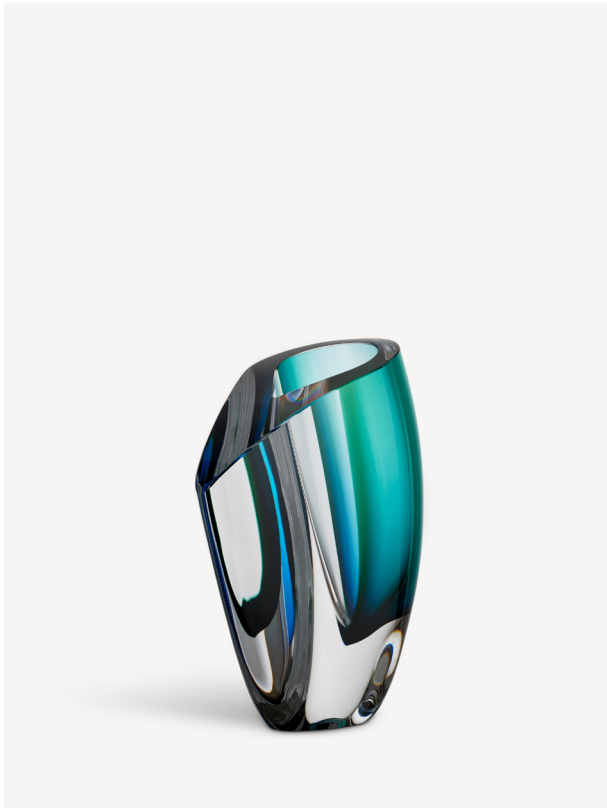


**Mirage vase blue/amber GW AC-23** Art. nr. 7040705 | H 210 mm W 145 mm W 3.1 kg



# Mirage

Design Göran Wärff



**Mirage vase green/blue GW AC**

Art. nr. 7040703

H 210 mm W 145 mm W 3.1 kg



**Mirage vase blue/brown GW AC-21**

Art. nr. 7042100

H 210 mm W 145 mm W 2.7 kg



**Mirage vase blue/brown GW AC-21**

Art. nr. 7042107

H 310 mm W 160 mm W 6.3 kg



**Mirage vase green/blue, GW AC-22**

Art. nr. 7042220

H 310 mm W 103 mm L 165 mm W 6.0 kg



# Mirage

Design Göran Wärff



**Mirage vase blue/amber 310mm, GW AC-23**

Art. nr. 7042221

H 310 mm W 103 mm L 165 mm W 6.0 kg



**Mirage vase grey/red GW AC-23**

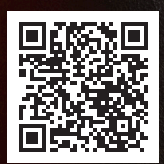
Art. nr. 7042222

H 310 mm W 103 mm L 165 mm W 6.0 kg



**Mirage dish 265mm, GW AC-23** Art. nr. 7430073 | H 95 mm W 265 mm L 380 mm W 4.3 kg









“I’m passionate about the larger context, the overall whole. I love building worlds, creating moods and actions. I think of my installations as movies without dialogue – like I’m the director and the glass figures are my actors. My aim is to spark the viewer’s sense of empathy, not to dictate any truths. The more interpretations, the better.”

# Kjell Engman

Kjell Engman is from a musical family, and he plays the bass. Music has always permeated his glass art – not only in his popular glass instruments, but in the dancing musicality and joie de vivre conveyed by his figures, objects and settings.

As a glass artist, Engman has always been a storyteller. He is passionate about building imaginary worlds of glass and other elements – sets, lighting, and other effects, such as fragrance and of course, music, soundtracks.

Kjell Engman’s glass art is characterized by bold colors, generous and playful shapes and the constant presence of whimsy and humor. In addition to music and instruments, his glass art is populated by animals, nature and symbols from daily life as well as from the conscious and subconscious. A life-affirming abundance of joy could be considered a theme throughout his versatile expressions as a glass artist.

“In my view, the glass is the pen for writing my stories. I want to offer my audience joy and fantasy. My art should make people smile; it should be something positive. For example, take my bathing ladies, inspired by an unforgettable visit to a church in Harlem, New York. The gospel-singing ladies I saw there were some of the biggest people I had ever seen, but they moved with such incredible lightness. It’s not about how you look, but your self-confidence and a joy that makes you float. That is the feeling I want to convey through my art.”

The diversity of Kjell Engman’s work has led some viewers to perceive his artistic style as scattered, as he sometimes says. But he enjoys this whimsical, scattered quality.

“What energizes me is when I set up a show, as I did in Stenungssund a few years ago, with my bathing ladies on a beach, and thousands of viewers come to see them in a few weeks. It inspires me when my audience tells me about the fantasies that my worlds have awakened for them. I really don’t enjoy titling my works. I don’t want to guide the viewer; rather, I want everyone to create their own fantasy world.”

Kjell Engman was born in Stockholm and studied at the University of Arts, Crafts & Design and at the famous, trendsetting Pilchuck Glass School outside of Seattle, Washington in the Pacific Northwest of the US. He has been active as a glass artist and designer at Kosta Boda since 1978. Kjell Engman lives on Öland. He celebrated 45 years at Kosta Boda 2023.



# Fidji

Design Kjell Engman

Raised in a family of musicians, Kjell Engman has always been a musician and a bass player in addition to his professional role as a glass artist. Throughout his long career, Engman's works have been characterized by vibrant musicality, playfulness, flying colors, joy of life and a distinctive warm sense of humor. Fidji is among his most beloved, classic design objects. The collection, which is part of Kosta Boda Artist Collection, launched in 1988.

"The idea came up a long time ago, when I accidentally dropped a can of motor oil in the bathtub. A pattern in three colors appeared – two hard ones and one soft," Engman says. "In the end, I selected just two colors. The shape came naturally working with hand-blown glass. I came across the name having watched a documentary about beautiful blossoming Fidji. For whatever reason, the documentary caught my attention and I came to associate it with the bottles."





**Fidji vase optic ocean KE AC-23**

Art. nr. 7460185

H 670 mm W 165 mm L 200 mm W 4.1 kg





**Fidji vase optic coral KE AC-23**

Art. nr. 7460184

H 450 mm W 160 mm L 125 mm W 2.1 kg



**Fidji vase optic forest green KE AC-23**

Art. nr. 7460183

H 365 mm W 135 mm L 100 mm W 1.2 kg

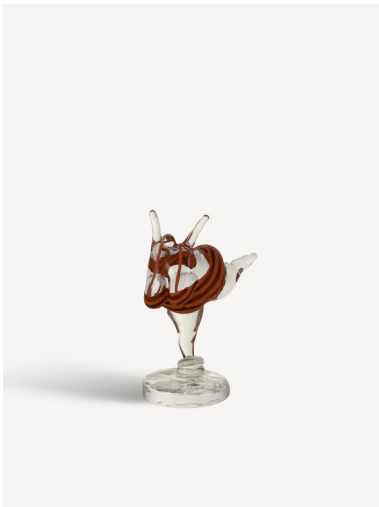




# Badlycka

Design Kjell Engman

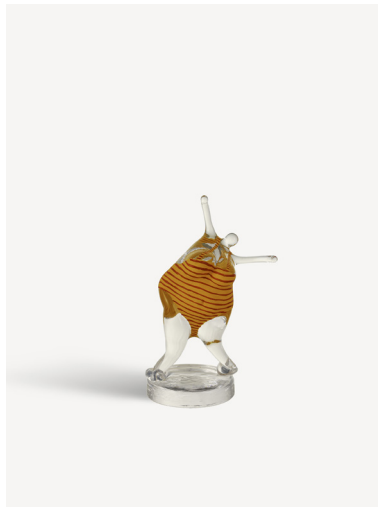
Happiness was inspired by one of Kjell Engman's trips to the US, where he was captivated by a women's gospel choir performance at a church, filled with singing and dancing. He has eternalized the memory in various ways with these glass women. The object from Kosta Boda Artist Collection is pressed in a mold at Kosta Glassworks, and then shaped into its unique design and hand-painted.



**Happiness red KE AC-21**

Art. nr. 7460170

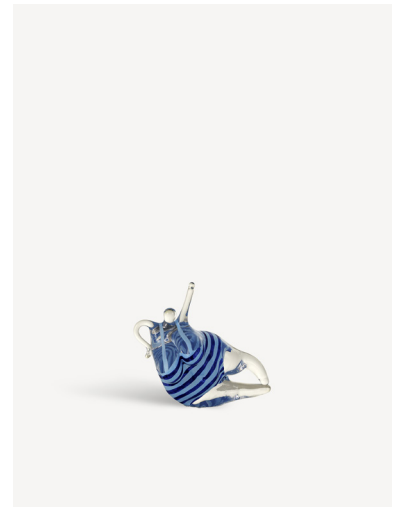
H 200 mm W 155 mm W 1.6 kg



**Happiness yellow/red KE AC-21**

Art. nr. 7460171

H 225 mm W 150 mm W 1.6 kg



**Happiness turquoise/blue KE AC-21**

Art. nr. 7460172

H 145 mm W 150 mm W 1.1 kg



# Golden Angel

Design Kjell Engman

Golden Angel was made with inspiration from Kjell Engman's bathing ladies, which have the same full-bodied shape and are modeled after gospel singers he saw performing while traveling in the US. Golden Angel watches over the ladies as they take a dip in the morning darkness – a lovely, thoughtful gift and a wish for happiness. This item from Kosta Boda Artist Collection is pressed in a mold at Kosta Glassworks. The sandblasted wings are cut on, and the body, which is hand-painted in real 24 karat gold, stands on a glass foot casted in a mold.



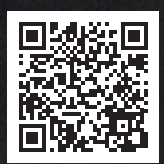


**Golden Angel, KE AC-21**

Art. nr. 7460176

H 140 mm W 55 mm L 55 mm W 0.4 kg





■ ”I paint the whole world!”

## Ulrica Hydman Vallien

Since her breakthrough as a glass artist in the 80s, Ulrica Hydman Vallien has been one of Sweden's most beloved artists. Her bold, personal, free, uncontrollably visual style became known beyond art audiences, and far beyond the borders of Sweden.

After her sudden death in 2018, Ulrica Hydman Vallien has received greater recognition among fine art circles, which had at times been critical of her during her lifetime.

The acclaimed exhibition, A Paradise Attack, held at Liljevalchs, Stockholm (Sweden's first independent and public art gallery for contemporary art), in 2020, and the eponymous documentary on Swedish television, featured the breadth, richness and unlimited imagination of her artistry. In addition to being a glass artist and designer, Ulrica was also an incredible painter, ceramic artist, textile artist and visual poet.

After her death and the retrospective at Liljevalchs, Hydman Vallien also gained broader recognition as the great source of inspiration she was, especially among younger female artists. As such, her work is also stirring increasing international interest. We want to feature this characteristic with our tribute collection in her honor and with the Ulrica Hydman Vallien scholarship.

Ulrica Hydman Vallien was born and raised in Stockholm in a family with significant interest in the arts, and from which three of the five siblings attended Konstfack (University of Arts, Crafts and Design,

Stockholm, Sweden) including Ulrica. One of her teachers there was Stig Lindberg, who became a major source of inspiration. She also met her husband, Bertil Vallien, at the university. Together, after graduating, they began their artistic careers as radical ceramic artists in the US, traveling around the United States and Mexico on artistic field trips.

When Bertil Vallien was offered a position as an artist at the Åfors Glassworks in 1963, the couple moved to Småland. In the studio in Åfors, they worked side by side for half a century.

For Kosta Boda, Ulrica Hydman Vallien is of invaluable importance both as a person and as an artist. Ulrica's artistic legacy lives on, cared for and developed by younger generations of artists and craftspeople in Kosta Boda's studios and hot shops. Long live Ulrica!

Ulrika Hydman Vallien's art is represented in collections at institutions such as Moderna Museet and Nationalmuseum in Stockholm, the Gothenburg Museum of Art, Röhsska Museum, Victoria and Albert Museum in London and many more.



# PET

## Design Ulrica Hydman-Vallien

PET from Kosta Boda Artist Collection was Ulrica's spontaneous response after Björn Kjelltoft painted her pattern on PET bottles and paper plates for an exhibition at the University of Arts, Crafts & Design (Konstfack). Ulrica took back control of her designs and used them to adorn a limited edition of PET bottles made of glass. The objects, which is marked with Ulrica Hydman Vallien's seal, is mouth-blown in a mold at Kosta Glassworks, and then hand-painted, which gives each PET a unique expression.

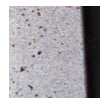


**PET bottle aubergine UHV AC-21** Art. nr. 7540043 | H 337 mm W 95 mm W 0.9 kg









“Glass has an unparalleled quality. No other material can fascinate, create optical effects, and inspire thoughts of stability and impermanence in quite the same way. After all these years, it’s still just as exciting to open the annealing oven and see that glowing, life-threatening lava transformed into ice.”

# Bertil Vallien

It is almost unbelievable, but in partnership with Kosta Boda, Bertil Vallien has been exploring and developing glass art for over 60 years. During this long era, in continuous dialogue and collaboration with the glassworks’ master artisans, he has invented and refined his own artistic style in glass, taking it far beyond old traditions and techniques.

From the beginning, as he says himself, Bertil Vallien has been simultaneously fascinated by and grappling with the many incredible and seductive qualities of glass. He left the elegance of cut crystal behind early on. Through his revolutionary sand casts, he found his truth in a raw and poetic style. On his visionary journey to the melting point of glass, he and his employees have faced mighty challenges time and again.

Internationally, he has been called the Swedish rebel and the glass man. Early on, he participated in exhibitions around the world and already by the late 1960s, he had successes in Sydney and New York. Today, his glass is represented at museums and in collections on all continents. He has garnered particular praise in the US. In addition to regular exhibitions in New York, Seattle and Chicago, over time he has taught at the studios in Pilchuck and at universities around the country.

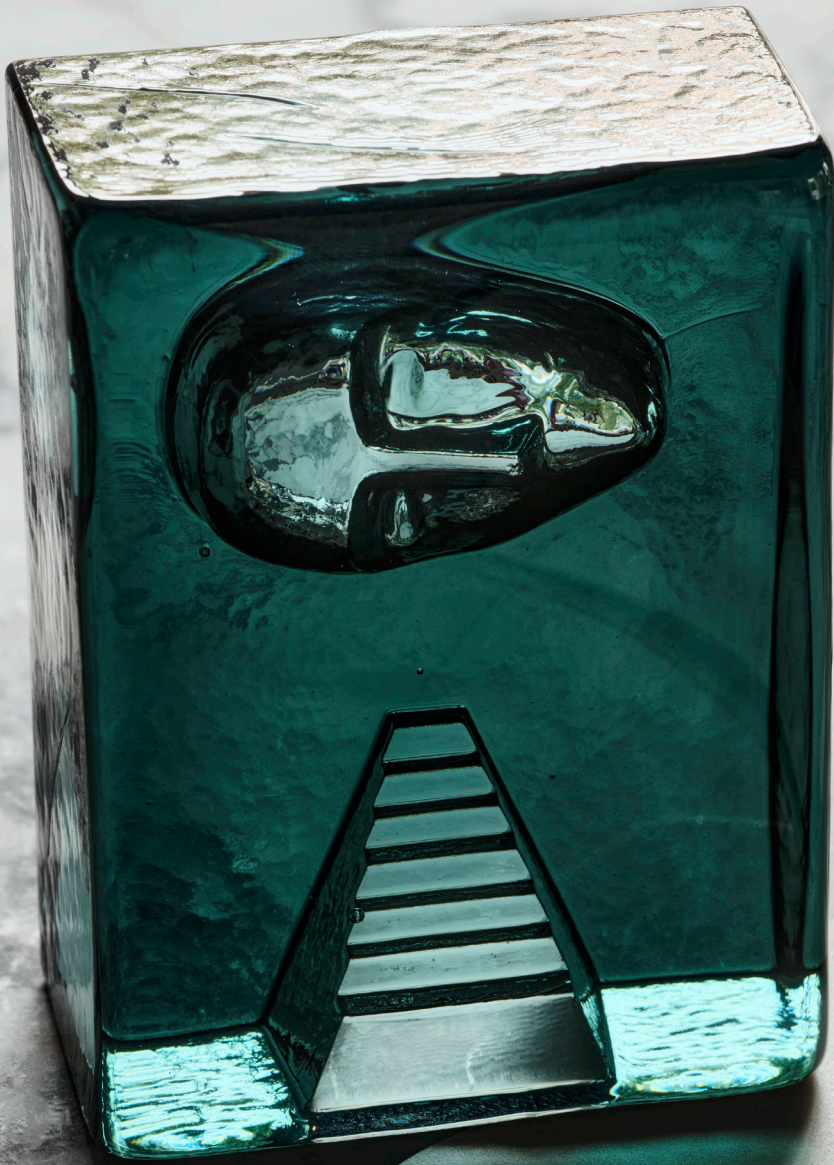
For the past three decades, we have produced the Artist Collection series, which is imbued with extra gravity and sophistication. Bertil’s contributions are numerous, with Galaxy, Pearl and Spin among the most popular.

Still now at age eighty-six, Bertil is in the middle of his career. What he has created will continue to bring us joy, well into the future. But we also look forward with great curiosity to his daily work in the studio, where every morning, he gathers his thoughts and his team to tackle new challenges. Brains, Gatekeeper and House of Mystery are among his new established pieces.

Vallien has won several awards and prizes around the world. The Imagine Museum named him Artist of the Future, he received the Royal Swedish Academy of Sciences’ medal for his work as a designer, and in 2002 he was awarded the Visionary Award from the Glass Art Society (GAS) - one of the finest awards a glass artist can receive.

For Kosta Boda, Vallien is of priceless importance – primarily for his own glass art, but also as a source of inspiration for other artists and designers.





**NEW**



# Azur

Design Bertil Vallien

Azur is a collection of cast and cut objects – like moments frozen in time. A staircase, a moon, a person. Space has always been a natural workplace for Bertil Vallien: the tiny human and the great, big world continuously sparking our curiosity. The collection, which is part of the Kosta Boda Artist Collection, first launched in 2018. The 2024 series is in petroleum blue – a color that Bertil used for several unique works that he created for his 60-year anniversary in 2023.



**Azur Stairs Petrol blue BV AC-24**

Art. nr. 7520214  
H 150 mm W 65 mm L 110 mm  
W 2.3 kg



**Azur Moon petrol blue BV AC-24**

Art. nr. 7520215  
H 150 mm W 65 mm L 110 mm  
W 2.3 kg



**Azur Man petrol blue BV AC-24**

Art. nr. 7520216  
H 150 mm W 65 mm L 110 mm  
W 2.3 kg



**Azur Frost petrol blue BV AC-24**

Art. nr. 7520217  
H 150 mm W 65 mm L 110 mm  
W 2.3 kg



# Azur

Design Bertil Vallien



**Azur Stairs BV AC-18**

Art. nr. 7520109

H 150 mm W 65 mm L 110 mm W 2.3 kg



**Azur Moon BV AC-18**

Art. nr. 7520110

H 150 mm W 65 mm L 110 mm W 2.3 kg



**Azur Man BV AC-18**

Art. nr. 7520111

H 150 mm W 65 mm L 110 mm W 2.3 kg



**Azur Frost BV AC-18**

Art. nr. 7520112

H 150 mm W 65 mm L 110 mm W 2.3 kg







# Beans

Design Bertil Vallien

Beans is Bertil Vallien's homage to Ingeborg Lundin, inspired by the famous "Apple". This object from Kosta Boda Artist Collection is mouth-blown in Kosta. Thanks to the technique, all Beans are unique.



**Beans golden brown BV AC-20** Art. nr. 7520133 | H 290 mm W 250 mm L 360 mm W 2.0 kg



# Beans bowl

Design Bertil Vallien

Beans Bowl in golden brown from Kosta Boda Artist Collection is mouth-blown at Kosta Glassworks and based on the same shape as Bertil Vallien's Beans. To create the bowl-like shape, after blowing a bubble, the glassblower sucks the glass in while it is hot.



**Beans bowl golden brown BV AC-21** Art. nr. 7520167 | H 120 mm W 245 mm L 245 mm W 1.8 kg



**Beans bowl frosted BV AC-21** Art. nr. 7520168 | H 120 mm W 245 mm L 245 mm W 1.8 kg





# Black Elements

Design Bertil Vallien

Bertil Vallien's world, we encounter the inner nature of glass. Clear glass is strongly contrasted against the opaque black plinth. Black Elements House of Mystery is cast in a charcoal mold with Vallien's renowned hand-painted head, cast in the solid block of glass. This object is part of Kosta Boda Artist Collection.



**Black elements House of mystery  
BV AC-15**

Art. nr. 7090876  
H 155 mm W 80 mm L 125 mm  
W 4.2 kg



**Black elements House of mystery  
gold BV AC-23**

Art. nr. 7520189  
H 95 mm W 125 mm L 125 mm  
W 1.5 kg



**Black elements house of mystery  
blue BV AC-23**

Art. nr. 7520190  
H 125 mm W 85 mm L 180 mm  
W 3.2 kg



# Blues

Design Bertil Vallien

Blues is an object with different figures inside the glass, which are among Bertil Vallien's classics. This object from Kosta Boda Artist Collection is cast at Kosta Glassworks.



**Blues Sculpture, BV AC** Art. nr. 7091008 | H 150 mm W 115 mm W 1.8 kg

# Caspar

Design Bertil Vallien

Caspar from Kosta Boda Artist Collection is a robust ship, cast in a mold at Kosta Glassworks, and decorated with copper figures and handmade details. This object carries the imagination away to outer space and the ocean – two mystical depths that serve as frequent inspiration for Bertil Vallien.



## Caspar BV AC-20

Art. nr. 7520146

H 45 mm W 60 mm L 230 mm W 1.0 kg

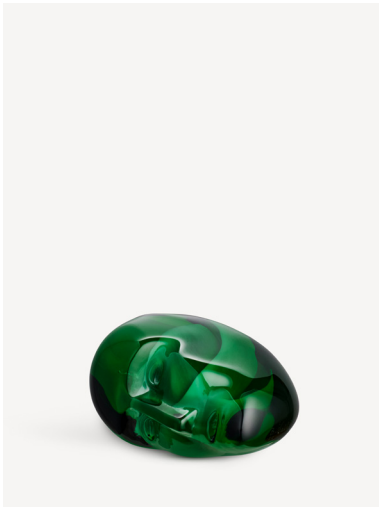




# Brains

Design Bertil Vallien

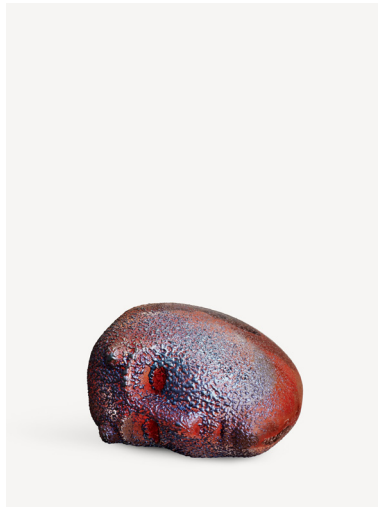
"Brains originates in an artistic theme that I began working with in the eighties, inspired by a girl named Karolina Olsson who slept – or, according to speculation, who intentionally opted out of life for 32 years. I have spent my entire career working as an artist and designer. I enjoy developing objects suitable for production at the glassworks. Now I've made a collection for Kosta Boda Artist Collection. Personally, I find them to be lovely company..."



**Walk with me 75mm, BV AC-21**

Art. nr. 7520155

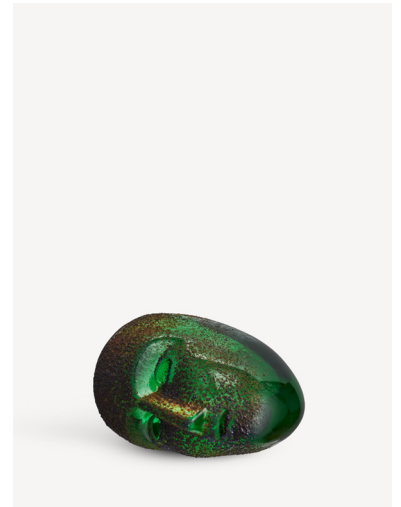
H 75 mm W 55 mm L 45 mm W 0.4 kg



**Go for it 75mm, BV AC-21**

Art. nr. 7520156

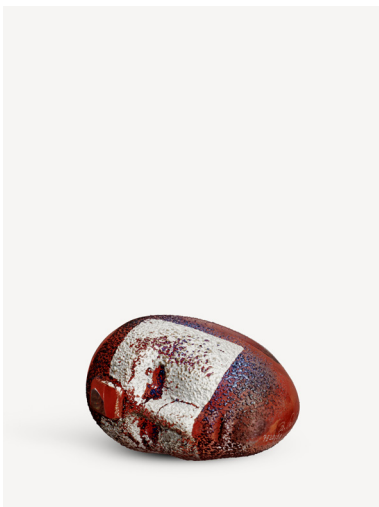
H 75 mm W 55 mm L 45 mm W 0.4 kg



**Remember the blue sky 75mm, BV AC-21**

Art. nr. 7520157

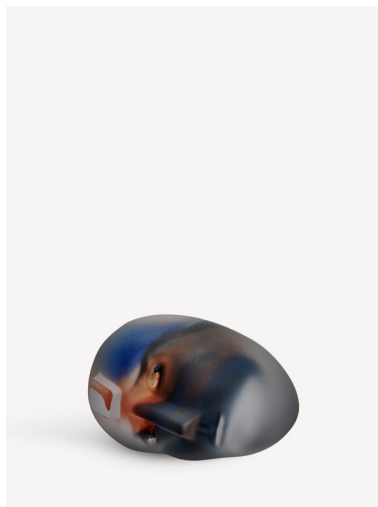
H 75 mm W 55 mm L 45 mm W 0.4 kg



**I see you BV AC-21**

Art. nr. 7520158

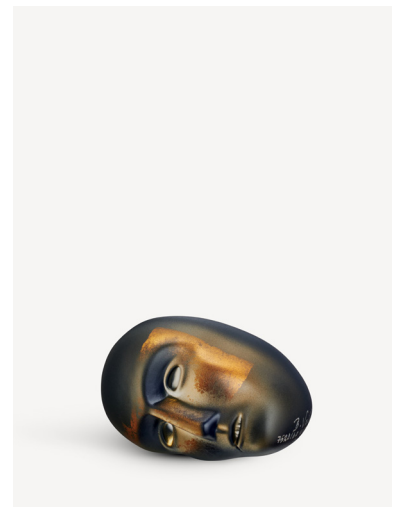
H 75 mm W 55 mm L 45 mm W 0.4 kg



**Inside matters BV AC-21**

Art. nr. 7520159

H 75 mm W 55 mm L 45 mm W 0.4 kg



**You exist - Here and now BV AC-21**

Art. nr. 7520160

H 75 mm W 55 mm L 45 mm W 0.4 kg

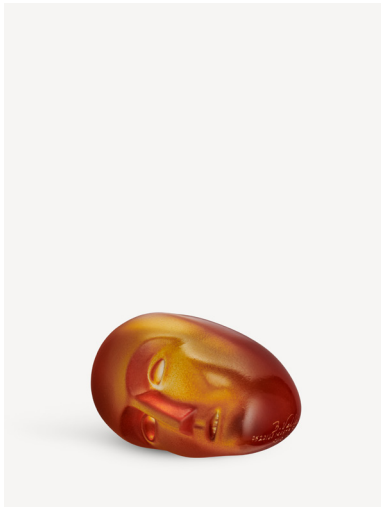




**Karolina blue 75mm, BV AC-98** Art. nr. 7099859 | H 75 mm W 45 mm L 45 mm W 0.5 kg

# Brains

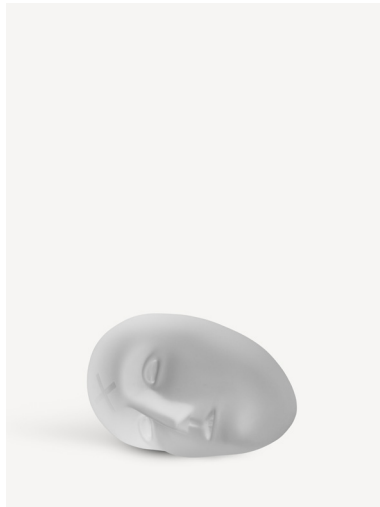
Design Bertil Vallien



**Joy wins BV AC-21**

Art. nr. 7520161

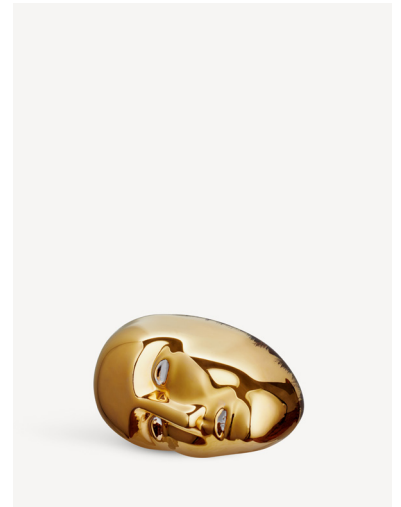
H 75 mm W 55 mm L 45 mm W 0.4 kg



**You are the light BV AC-21**

Art. nr. 7520162

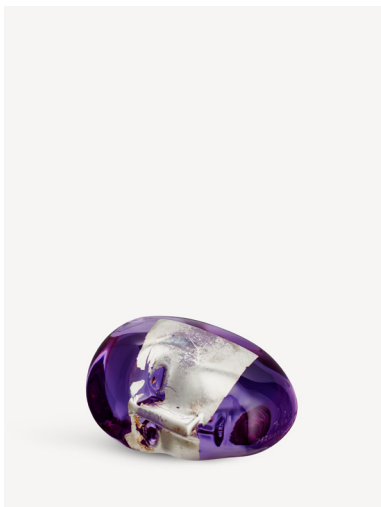
H 75 mm W 55 mm L 45 mm W 0.4 kg



**Everything is better when we dance BV AC-21**

Art. nr. 7520163

H 75 mm W 55 mm L 45 mm W 0.4 kg



**All is well BV AC-21**

Art. nr. 7520164

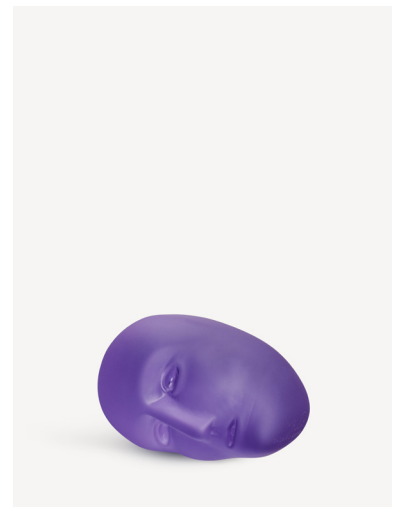
H 75 mm W 55 mm L 45 mm W 0.4 kg



**I dreamed of a blue horse BV AC-21**

Art. nr. 7520165

H 75 mm W 55 mm L 45 mm W 0.4 kg



**You made my day BV AC-21**

Art. nr. 7520166

H 75 mm W 55 mm L 45 mm W 0.4 kg



# Brains on Stone

Design Bertil Vallien

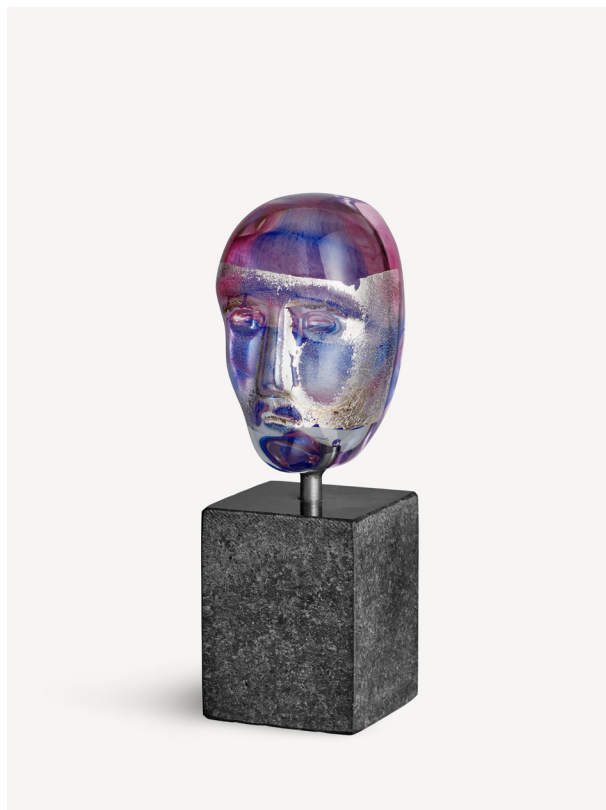
Brains on stone Loke, in a limited edition, is a classic Bertil Vallien object, resting on a stone plinth. This object from Kosta Boda Artist Collection is pressed in a mold at Kosta Glassworks and colored inside with powder pigment, which is revealed through the clear glass.



**Brains on stone Loke BV AC-18**

Art. nr. 7520100

H 75 mm W 55 mm L 45 mm W 0.7 kg



**Brains on stone Oden BV AC-18**

Art. nr. 7520101

H 75 mm W 55 mm L 45 mm W 0.7 kg



**Brains on stone Tor BV AC-18**

Art. nr. 7520102

H 75 mm W 55 mm L 45 mm W 0.7 kg



**Brains on stone Freja BV AC-18**

Art. nr. 7520103

H 75 mm W 55 mm L 45 mm W 0.7 kg





# Companion

Design Bertil Vallien

Somewhat more than a friend

Companion, four messengers by Bertil Vallien.

Throughout time, people have surrounded themselves with objects claimed to possess more power than “ordinary” things. A rare stone, an ornamental bone, a beautiful icon. Objects that are not only a feast for the eyes, but also form a kind of bond with their owners.

With a collection he has named Companion, Bertil evokes a similar dynamic. Friends, colleagues. The faces in shifting color with different messages. Yes. Hope. Love. And the latest one, with a very special relevance: PEACE.

The small messengers can be hung on the wall wherever their presence is most needed. Somewhat more than a friendship, in time even a love. Companion.

The Companion objects are made from circular glass at our glassworks in Kosta, Sweden. As the source glass varies in shade, so do the tones of the finished objects. As a result, each Companion gets a unique color DNA with every casting.



**Companion YES BV AC-23**

Art. nr. 7520206

H 93 mm W 45 mm L 57 mm W 0.3 kg



**Companion LOVE BV AC-23**

Art. nr. 7520207

H 93 mm W 45 mm L 57 mm W 0.3 kg



**Companion HOPE BV AC-23**

Art. nr. 7520208

H 93 mm W 45 mm L 57 mm W 0.3 kg









**Companion PEACE BV AC-23**

Art. nr. 7520211

H 93 mm W 45 mm L 57 mm W 0.3 kg





# Drifter

Design Bertil Vallien

Drifter from Kosta Boda Artist Collection is infused with simplicity and space, with a copper figure sealed inside the ship by Bertil Vallien. The object in clear glass is cast in a graphite mold at Kosta Glassworks, with a base that allows it to stand stably without a platform.



## Drifter BV AC-20

Art. nr. 7520135

H 45 mm W 40 mm L 280 mm W 0.7 kg

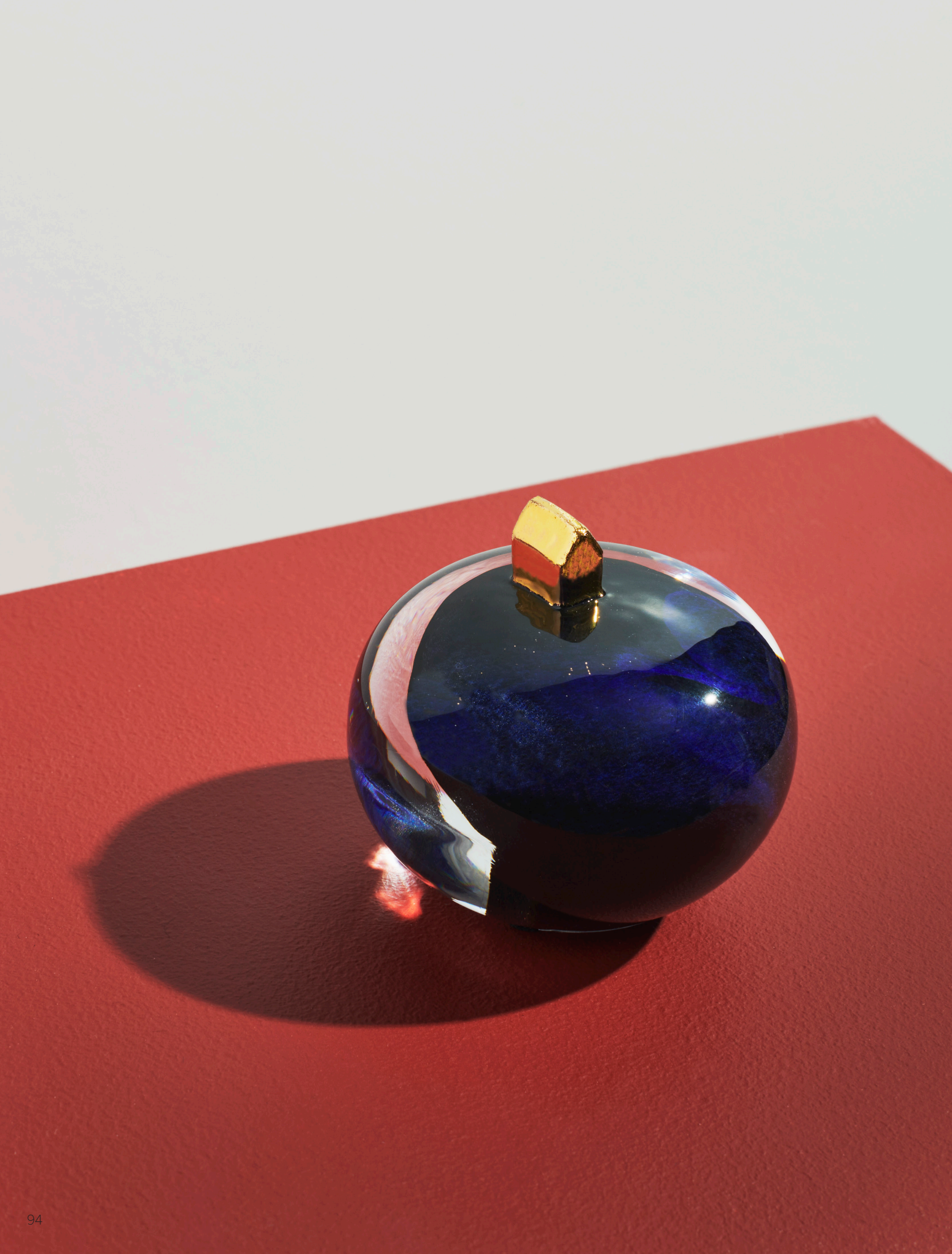


## Drifter blue BV AC-20

Art. nr. 7520145

H 45 mm W 40 mm L 280 mm W 0.7 kg





# Earth

Design Bertil Vallien

“Earth is our planet, with a small house — my home, my fortress, my place on Earth. The house and home are deeply symbolic, a powerful metaphor for so much in life — security, family, myself, my possessions, my world. But the house can also be a prison. I enjoy simple symbolism. It is a decorative object, but if one so wishes, it contains much more. It is among the themes that I have simplified in order to reach the core — the boat, the stairs, the ladder, the staff. You might call it my alphabet of symbols.”

– Bertil Vallien

The collection, which is part of the Kosta Boda Artist Collection, launched in 2010.



**Earth Home, BV AC-10**

Art. nr. 7091035

H 95 mm W 105 mm L 105 mm W 1.3 kg



**Earth My Universe, BV AC-12**

Art. nr. 7091328

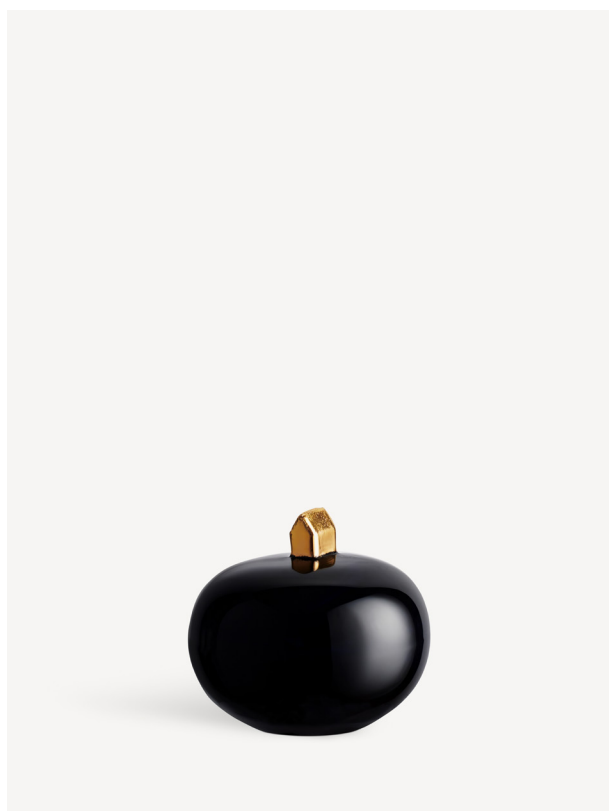
H 95 mm W 105 mm L 105 mm W 1.4 kg





# Earth

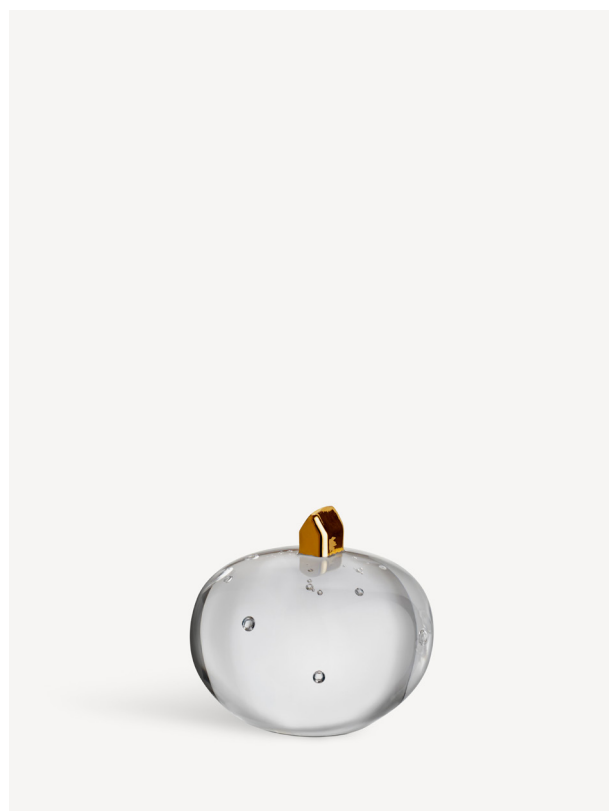
Design Bertil Vallien



**Earth On top Midnight, BV AC-23**

Art. nr. 7520187

H 65 mm W 70 mm L 55 mm W 0.2 kg

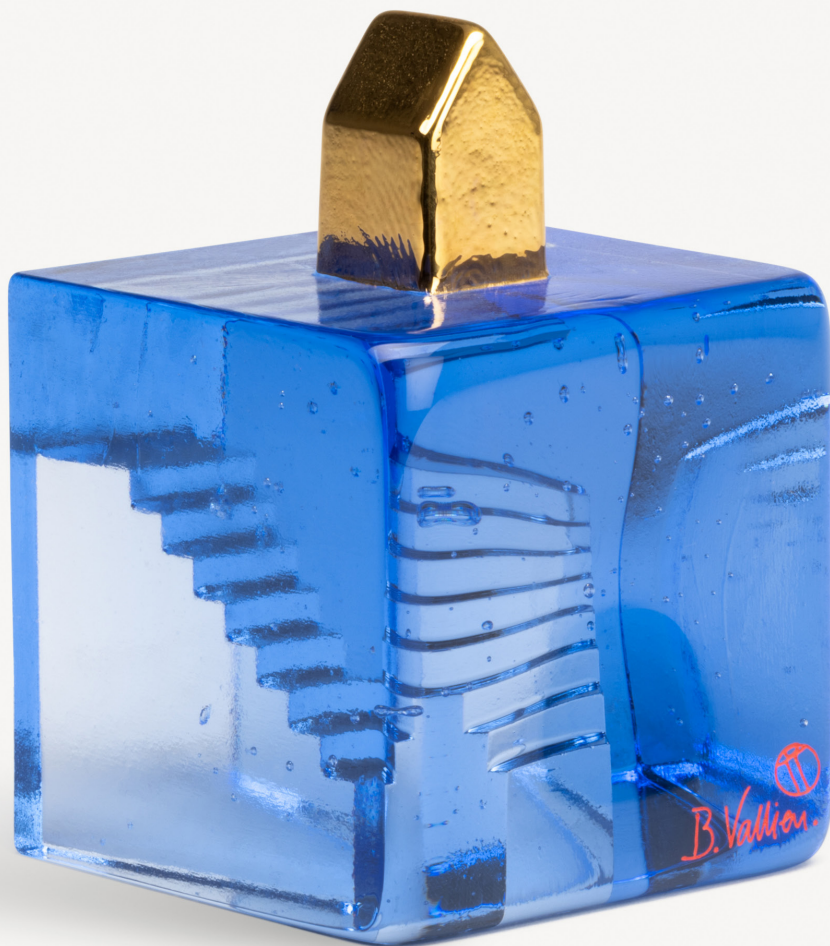


**Earth On top Mini, BV AC-21**

Art. nr. 7520151

H 60 mm W 65 mm L 65 mm W 0.4 kg





**Fortress Hidden stairs blue/gold BV AC-23** Art. nr. 7520200 | H 115 mm W 75 mm L 75 mm W 1.1 kg

# Fortress

Design Bertil Vallien

In this series, Bertil Vallien lines up two of his favorite expressions side by side: blue glass and a gold-painted object. Interpretation of the sculptures is of course up to the individual viewer, but for Bertil, this is first and foremost a playful approach to the ability of glass to continuously change and put its artist to new tests.

Each form has its own narrative. Here, glass and mankind blend in a unique way to tell an emphatic story. Fortress is part of Bertil Vallien's anniversary collection, "Bertil Vallien: 60 years with Kosta Boda" (1963–2023), and is produced at Kosta glassworks in Sweden.



**Fortress Vessel blue/gold BV AC-23**

Art. nr. 7520201  
H 75 mm W 40 mm L 155 mm  
W 0.5 kg



**Fortress Stairs blue/gold BV AC-23**

Art. nr. 7520202  
H 110 mm W 75 mm L 75 mm  
W 0.8 kg



**Fortress Cube blue/gold BV AC-23**

Art. nr. 7520203  
H 85 mm W 60 mm L 60 mm  
W 0.5 kg





**Headman blue BV AC-20**

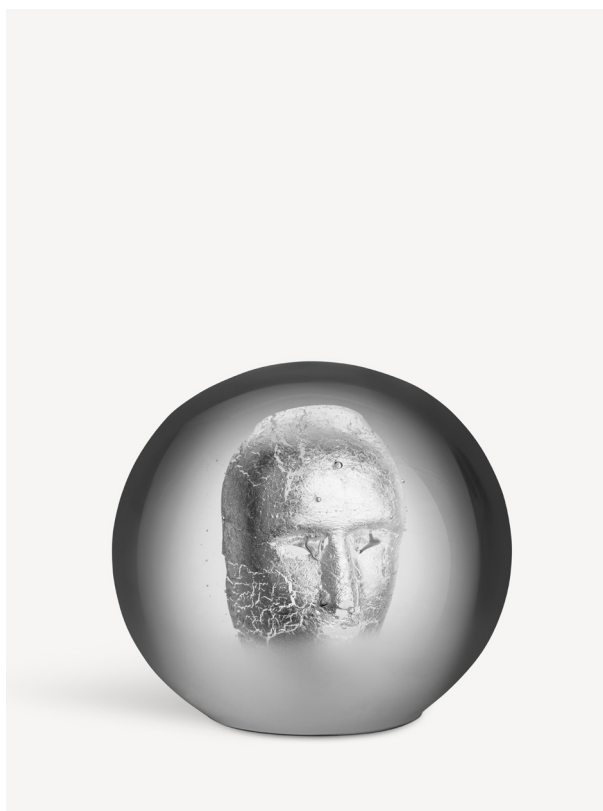
Art. nr. 7520144

H 145 mm W 120 mm L 120 mm W 2.5 kg

# Headman

Design Bertil Vallien

Headman by Bertil Vallien is encased in its own world – peaceful, seeing, with a focus on the present. This object from Kosta Boda Artist Collection is shaped in glass with a silver leaf face at Headman's center. It is handmade at Kosta Glassworks and mounted on an iron plinth. The collection launched in 2003.



**Headman BV AC-20**

Art. nr. 7520143

H 145 mm W 120 mm L 120 mm W 2.5 kg





# Brains Look

Design Bertil Vallien

Brain Look is a decorative collector's item that can easily be affixed to a wall using the stainless steel bracket that is included. This object in clear glass is by Bertil Vallien and is part of Kosta Boda Artist Collection. It is cast in a mold at Kosta Glassworks and colored inside with color rods made at the glassworks. The color is revealed through the clear glass, with a pattern of lines representing meandering thoughts.



**Brains Look BV AC-17**

Art. nr. 7091735

H 135 mm W 85 mm L 120 mm

W 1.4 kg



**Brains Look in BV LE-17**

Art. nr. 7091736

H 135 mm W 85 mm L 120 mm

W 1.4 kg



**Brains Look In orange 135mm,  
BV ED-18**

Art. nr. 7520099

H 135 mm W 85 mm L 120 mm

W 1.4 kg



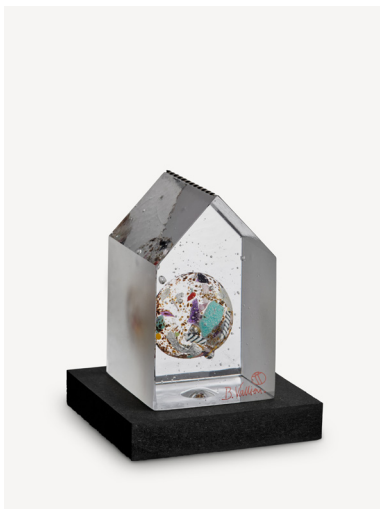


# My Palace

Design Bertil Vallien

A solid cast cubic-shaped house that has become an established miniature universe in Bertil Vallien's workshop. This collection is typical of the artist in many ways, notably representing his sense of space. These works of glass seem haunted by a floating sphere, a head – or simply by emptiness. In Bertil's many years of exploring the inherent magic of glass, he always wants us to discover its natural form. So, here again, the focus is all on the glass itself. It is beautiful, playful, verging on the impossible!

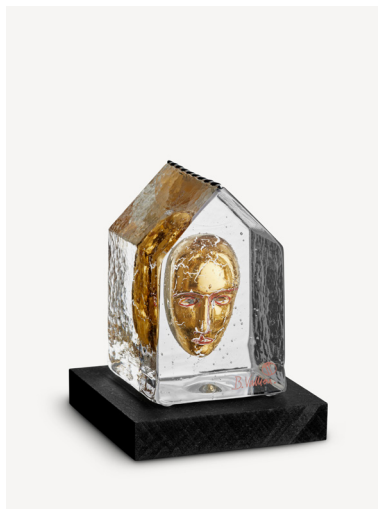
My Palace is part of Bertil Vallien's anniversary collection, "Bertil Vallien: 60 years with Kosta Boda" (1963–2023), and is crafted at the Kosta Glassworks in Sweden.



**My Palace Globe BV AC-23**

Art. nr. 7520197

H 95 mm W 65 mm L 70 mm W 1.1 kg



**My Palace Golden Head BV AC-23**

Art. nr. 7520198

H 95 mm W 65 mm L 70 mm W 1.1 kg



**My Palace Home BV AC-23**

Art. nr. 7520199

H 95 mm W 65 mm L 70 mm W 1.0 kg



# Vertical Journey

Design Bertil Vallien

Vertical Journey is one of Bertil Vallien's more detailed ships. This object in clear glass is cast, with a hand-painted head, surrounded by different copper figures that are lowered into the glowing glass during the process. This ship from Kosta Boda Artist Collection comes mounted on a black wooden plinth.



**Vertical journey BV AC-20** Art. nr. 7520142 | H 285 mm W 70 mm L 70 mm W 3.0 kg

# Pilgrim

Design Bertil Vallien

Pilgrim by Bertil Vallien is a pitch black ship with a sunken copper figure. This object from Kosta Boda Artist Collection is hand-made at Kosta Glassworks in black pot color, which is revealed through the clear glass.



**Pilgrim, BV AC-18** Art. nr. 7520119 | H 55 mm W 70 mm L 240 mm W 0.8 kg



# KostaBoda

41 Madison Ave, 9th floor, New York, NY 10010

(800) 351-9842 – [kostaboda.us](http://kostaboda.us)

[customer care@orrefors.us](mailto:customer care@orrefors.us)

[www.kostaboda.us/product\\_types/art-glass](http://www.kostaboda.us/product_types/art-glass)