

GALWAY

CRYSTAL



GALWAY

CRYSTAL

Galway Crystal has long been one of the world's best known and loved brands of traditionally crafted crystal.

Nestled in the heart of the West of Ireland, on the shores of Galway Bay, Galway Crystal is steeped in the rich and diverse heritage of this unique city.

Our inspiration comes from the sheer beauty of the surrounding countryside - Connemara, Galway Bay and Lough Corrib and from the wealth of history and folklore which is synonymous with Galway, the famous City of the Tribes.

Our beautiful ranges of tabletop, stemware, barware, giftware, lighting, textiles and jewellery reflect these influences in their timeless elegance.

Galway Crystal does not shy away from the modern look however with the creation of simplistic fluid yet stylish patterns that reflect the modern lifestyle.

Contents

Barware	64 - 65
Stemware / Glassware	66 - 83
Lighting	84 - 85
Giftware	86 - 98
Fashion	99 - 118
Textiles	119 - 120
Jewellery	121 - 142
Personalised / Corporate	143 - 150



Galway Crystal : Barware

Whiskey / Cooling Stones



GCS02
Cooling Stones Set
of 4 - White / Grey
Granite



GCS04
Cooling Stones Set
of 4 - Green Marble



GCS01
Cooling Stones Set
of 4 - White Jade



GWS04
Whiskey Stones
(Set of 4)

Galway Crystal cooling stones are a novel way of cooling your favourite drinks, and pair perfectly with our range of crystal stemware glasses.

How to use your cooling stones set:

Cooling stones can be used to cool your whiskey, martini, cocktails, liqueur etc. without diluting the drink.

1. Place cooling stones in the fabric pouch provided
2. Place pouch and stones into the freezer. Leave for minimum 1 - 2 hrs.
3. Use the cold stones to chill, whiskey, martini, cocktails, liqueur etc. (not suitable for large volumes of drink)
4. To wash stones, please wash by hand.

Not suitable for the dishwasher.



GCS03
Cooling Stones Set of 4 -
Polished Red Granite



Galway Crystal : Barware

Whiskey / Cooling Stones

Galway Crystal Cooling Stones are a must-have for your drinks cupboard. These stones chill the liquid without diluting it and will transform the way you prepare your favourite beverage. Our cooling stones are presented to you in a rustic wooden box containing an ice tongs and a soft velvet pouch adding that luxurious touch.



GCS05
Cooling Stones Gift Set -
White Jade (9 Stones)



GWS01
Whiskey Stones Gift Set -
(9 Stones)



G60010
Tall Carafe *
5.3"(W) x 14.5"(H)

Galway : Barware

Carafes & Gin & Tonic



G60011
Carafe *
8.7"(W) x 9.4"(H)



G600152
Gin & Tonic - Lemon & Lime (Pair) *
4.3"(W) x 9.1"(H) each



G600132
Gin & Tonic - Pink (Pair) *
4.3"(W) x 9.1"(H) each



G600142
Gin & Tonic - Blue (Pair) *
4.3"(W) x 9.1"(H) each

Galway : Stemware

Liberty

G200052

Liberty Flute (Pair) *
2.6"(W) x 10.2"(H) each

G200012

Liberty Goblet
(Pair)*
2.8"(W) x 9"(H) each

G320122

Erne Craft Beer / Cocktail
(Pair)*

2.8"(W) x 7.5"(H) each



Galway :
Stemware / Barware

Erne Glassware

A pattern taking inspiration from the River of the same name. Rising in County Cavan and rippling through Fermanagh then turning into Donegal Bay.



G320032
Erne Flute (Pair)*

G320034
Flute (Set of 4)*
2.4"(W) x 9.5"(H) each

G32010
Erne Carafe*
6.3"(W) x 10.6"(H)



Galway : Stemware / Barware

Erne Glassware



G320022

Erne Wine (Pair)*

G320024

Erne Wine (Set of 4)*
3.1"(W) x 8.9"(H) each



G320052

Erne Taster/Sherry Pair*

G320054

Taster/Sherry (Set of 4)*
2.2"(W) x 6.9"(H) each



G320062

Erne Hiball (Pair)*

G320064

Hiball (Set of 4)*
2.4"(W) x 6"(H) each



G320082

Erne Gin & Tonic (Pair) *
3.3"(W) x 8.5"(H)

G320072

Erne Saucer/
Champagne (Pair)*

G320074

Saucer/Champagne
(Set of 4)*
4.7"(W) x 6.9"(H) each





Galway : Glassware

Elegance



G900072

Elegance Brandy / Irish
Cream Liqueur (Pair) *
3.7"(W) x 5.3"(H) each



G900062

Elegance Brandy
Balloon (Pair) *
3.9"(W) x 6.1"(H) each



G900092

Elegance Tumbler (Pair)*
2.8"(W) x 3.5"(H) each



G900082

Elegance Hi ball (Pair)*
2.5"(W) x 6"(H) each

Galway : Glassware

Elegance



G900052
Elegance Martini / Cocktail (Pair) *
5.1"(W) x 6.7"(H) each



G900032
Elegance Champagne /
Prosecco (Pair) *
2.3"(W) x 9.5"(H) each



G900022
Elegance White Wine
(Pair) *
3.2"(W) x 8.6"(H) each



G900012
Elegance Red Wine
(Pair) *
3.2"(W) x 9.1"(H) each



G900042
Elegance Gin & Tonic
(Pair) *
5.1"(W) x 9.1"(H) each

G322042
Tumbler (Set of 2)
3"(W) x 3.9"(H) each



G322052
Craft Beer / Cocktail
(Set of 2)
2.8"(W) x 7.5"(H) each



Galway : Stemware / Barware

Erne Colour - Blush



G322002
Wine (Set of 2)
3.1"(W) x 8.9"(H) each



G322012
Flute (Set of 2)
2.4"(W) x 9.5"(H) each



G322022
Cocktail / Saucer
Champagne (Set of 2)
4.7"(W) x 6.9"(H) each



G322032
Hiball (Set of 2)
2.4"(W) x 6"(H) each



G322082
Gin & Tonic (Set of 2)
3.3"(W) x 8.5"(H) each



G32013
Carafe
6.3"(W) x 10.6"(H)

Galway : Stemware / Barware

Erne Colour - Amethyst



G324002
Wine (Set of 2)
3.1"(W) x 8.9"(H) each



G324012
Flute (Set of 2)
2.4"(W) x 9.5"(H) each



G324022
Cocktail / Saucer
Champagne (Set of 2)
4.7"(W) x 6.9"(H) each



G324032
Hiball (Set of 2)
2.4"(W) x 6"(H) each



G324082
Gin & Tonic (Set of 2)
3.3"(W) x 8.5"(H) each



G32015
Carafe
6.3"(W) x 10.6"(H)

G324042
Tumbler (Set of 2)
3"(W) x 3.9"(H) each



G324052
Craft Beer / Cocktail
(Set of 2)
2.8"(W) x 7.5"(H) each



G323042
Tumbler (Set of 2)
3"(W) x 3.9"(H) each



G323052
Craft Beer / Cocktail
(Set of 2)
2.8"(W) x 7.5"(H) each



Galway : Stemware / Barware

Erne Colour - Aqua



G323002
Wine (Set of 2)
3.1"(W) x 8.9"(H) each



G323012
Flute (Set of 2)
2.4"(W) x 9.5"(H) each



G323022
Cocktail / Saucer
Champagne (Set of 2)
4.7"(W) x 6.9"(H) each



G323032
Hiball (Set of 2)
2.4"(W) x 6"(H) each



G323082
Gin & Tonic (Set of 2)
3.3"(W) x 8.5"(H) each



G32014
Carafe
6.3"(W) x 10.6"(H)

Galway : Stemware / Barware

Erne Colour - Amber



G321002
Wine (Set of 2)
3.1"(W) x 8.9"(H) each



G321012
Flute (Set of 2)
2.4"(W) x 9.5"(H) each



G321022
Cocktail / Saucer
Champagne (Set of 2)
4.7"(W) x 6.9"(H) each



G321032
Hiball (Set of 2)
2.4"(W) x 6"(H) each



G321082
Gin & Tonic (Set of 2)
3.3"(W) x 8.5"(H) each



G32011
Carafe
6.3"(W) x 10.6"(H)

G321042

Tumbler (Set of 2)
3"(W) x 3.9"(H) each



G321052

Craft Beer / Cocktail
(Set of 2)
2.8"(W) x 7.5"(H) each



G200062

Irish Coffee (Pair)*

3.3"(W) x 5.7"(H) each



Galway : Barware

Irish Coffee & Latte

To enhance the taste of this, most traditional of Irish drinks for you. Galway Crystal have created these delicately handcrafted Irish Coffee glasses.

Authentic old Irish recipe:

- **Pre-heat the Galway Crystal glass with hot water (place a spoon in the glass to avoid shattering).**
- **Pour in 2oz of good Irish Whiskey**
- **Pour in 5oz of strong hot coffee over the whiskey**
- **Add 1-2 teaspoons of brown sugar and stir well, make sure that the sugar is dissolved**
- **Add whipped cream to top. Do not stir after adding the cream.**

The true flavour of Irish Coffee is obtained by drinking the mixture through the cream. May you enjoy this drink and many more of them throughout the years. "Sláinte!"



G200502US

Irish Blessing Latte (Pair) *

3.3"(W) x 5.7"(H) each

G200512US

Trinity Knot Shamrock

Latte (Pair) *

3.3"(W) x 5.7"(H) each



G200072

Latte Mugs (Pair) *

3.3"(W) x 5.7"(H) each





Glasses in the set can be engraved see inset image

Galway : Barware

Renmore

Introducing our Renmore Whiskey Set. Presented in a wooden gift box with all the accessories you will need to enhance the enjoyment of your favourite whiskey. An ideal gift for any occasion.

GWS02

Renmore Whiskey Set
Gift set contains;

- Wooden Box: 10.2”(L) x 8.3”(W) x 4.7”(H)
- 2 x slate coasters: 3.9” diameter
- 8 x White/Grey Granite Cooling Stones
- 1 x Stainless Steel Tongs: 5.1”(L) x 1.2”(W) x 0.6”(H)
- Wooden Stone Holder: 4.5”(L) x 2.4”(W) x 0.8”(H)
- 2 x Renmore DOF Glasses



GWS02E

Renmore Whiskey Set *
Glasses can be engraved



G350062
Renmore D.O.F. (Pair) *
3.5”(D) x 4”(H) each



G350064
Renmore D.O.F. (Set of 4) *
3.5”(D) x 4”(H) each



G350002

Renmore Goblet (Pair)
3.1"(W) x 8.1"(H) each



G350004

Renmore Goblet (Set of 4)
3.1"(W) x 8.1"(H) each



G350092

Renmore Hi-Ball (Pair)
2.5"(D) x 5.7"(H) each



G350094

Renmore Hi-Ball (Set of 4)
2.5"(D) x 5.7"(H) each



G35080

Renmore Decanter Set
Decanter 4"(W) x 9.5"(H)
D.O.F. 3.5"(D) x 4"(H) each

Galway : Glassware

Renmore

Renmore or "An Rhinn Mhór" in gaelic.
A range designed for everyday use.



Galway : Glassware

Claddagh Friendship

Created in the Claddagh Village and used as a marriage ring in days of old. The Claddagh Ring has become a token of love. The three elements of the Ring: Heart, Hands & Crown - symbolise Love, Friendship & Loyalty.

G293202

Claddagh Red Wine (Pair)*

3.1"(W) x 8.7"(H) each



G293212

Claddagh White Wine (Pair)*

3"(W) x 7.5"(H) each



G293252

Claddagh Flute (Pair) *

2.2"(W) x 8.7"(H) each



G293262

Claddagh D.O.F (Pair) *

3.1"(D) x 3.5"(H) each

Trinity Knot

An ancient Celtic symbol also known as the Triquetra. The Trinity Knot has many spiritual meanings, most popular being Spirit, Body & Mind. It frequently appears in many ancient manuscripts such as the Book of Kells.

G203452

Trinity Knot Flute (Pair)*

2.2"(W) x 8.7"(H) each



G203402

Trinity Knot Red Wine (Pair) *

3.1"(W) x 8.7"(H) each



G203412

Trinity Knot White Wine (Pair) *

3"(W) x 7.5"(H) each

Galway : Stemware

Personalised Flutes



G270392

Bride & Groom Flute
(Floral Spray - Pair) *
2.2"(W) x 8.7"(H) each



G300112

Floral Bride & Groom
Liberty Flute (Pair) *
2.6"(W) x 10.2"(H) each



G300152

Happy Engagement
Liberty Flute (Pair) *
2.6"(W) x 10.2"(H) each



G300102

Happy Anniversary
Liberty Flute (Pair) *
2.6"(W) x 10.2"(H) each



G300132

Trinity Knot Shamrock
Liberty Flute (Pair) *
2.6"(W) x 10.2"(H) each



G300122

Claddagh Shamrock
Liberty Flute (Pair) *
2.6"(W) x 10.2"(H) each



Galway : Glassware

Longford

Longford is the longest running Galway pattern, this suite proves popular from generation to generation.



G222972
Longford Brandy (Pair)*
3.3"(W) x 4.3"(H) each



G222902
Longford Red Wine (Pair)*
3.1"(W) x 8.7"(H) each



G222952
Longford Flute (Pair)*
2.2"(W) x 8.7"(H) each



G222912
Longford White Wine (Pair)*
3"(W) x 7.5"(H) each



GR222702
Longford Romance Flute (Pair)*
3.2"(D) x 10.4"(H) each



G222962
Longford D.O.F. (Pair)*
3.1"(W) x 3.5"(H) each



G222982
Longford Hi-Ball (Pair)*
2.6"(W) x 6.3"(H) each

Longford Decanters



G25180
Longford Square Decanter Tray Set*
16"(L) x 10.5"(W) x 9.5"cm(H)



G25190
Longford Brandy Decanter Tray Set*
19.8"(L) x 13.5"(W) x 10.7"(H)



G25192
Longford Miniature Brandy
Decanter Tray Set*
17.5"(L) x 10.2"(W) x 11.7"(H)



G25270
Longford Square
Decanter*
8.7"(H)



G25200
Longford Ship's
Decanter*
9.8"(H)



G22027
Longford Wine
Decanter*
13.5"(H)

Galway : Lighting

Chandeliers

Illuminate your home with luxury, from our European crafted crystal Chandelier range. Elegant eye-catching pieces that will add glamour and elegance to a contemporary or classic living space. All Chandeliers come flat packed and requires assembly, full instructions included in packaging.



GLE02US
Leenane Wall Sconce
(US Fittings)
12.2"(L) x 7.1(D) x 6.3"(H)



GLE03US
Leenane Three Arm
(US Fittings)
18.1"(D) x 16.1"(H)



GLE08US
Leenane Eight Arm
(US Fittings)
25.6"(D) x 21.7"(H)



GLE12US
Leenane Twelve Arm
(US Fittings)
25.6"(D) x 21.7"(H)



GLE15US
Leenane Fifteen Arm
(US Fittings)
31.5"(D) x 23.2"(H)



GLE18US
Leenane Eighteen Arm (US Fittings)
37.4"(D) x 27.6"(H)



GLE05US
Leenane Five Arm
(US Fittings)
18.1"(D) x 16.1"(H)

Chandeliers



GCH02US
Cashel Wall Sconce
(US Fittings)
12.2"(L) x 7.1"(D) x 10.6"(H)



GCH03US
Cashel Three Arm
(US Fittings)
18.1"(D) x 16.1"(H)



GCH08US
Cashel Eight Arm
(US Fittings)
24.8"(D) x 20.9"(H)



GCH05US
Cashel Five Arm
(US Fittings)
18.1"(D) x 20.9"(H)



GCH12US
Cashel Twelve Arm
(US Fittings)
25.6"(D) x 21.7"(H)



NEW



Galway : Giftware

Renmore

NEW



G35012
Renmore 12" Vase
5.4"(W) x 12"(H)



G35008
Renmore 10" Vase
4.9"(W) x 10"(H)



G35007
Renmore 9" Bowl
9"(W) x 3.7"(H)

Galway : Giftware

Atlantic

Galway Crystal is nestled on the shores of the Wild Atlantic Ocean. The lines of the Atlantic pattern mirror those of the powerful rushing waves.



G11614

Atlantic Small Bowl

6.5"(L) x 4.5"(W) x 3.5"(H)



G11613

Atlantic Large Bowl

12"(L) x 8.5"(W) x 4.5"(H)



G11612

Atlantic 13" Vase

5"(W) x 13"(H)



G45010

Dune 10" Square Vase *
10"(H)



Galway : Giftware

Dune

A collection influenced by the soft flowing lines of the sand dunes of Irelands extensive coastline.



G45014

Dune 14" Waisted
Vase *
14"(H)



G45013

Dune 12" Waisted
Vase *
12"(H)



G45012

Dune 12" Square
Vase *
12"(H)



G45076

Dune Party Bowl *
4.5"(W)



G45016

Dune 10" Bowl *
10"(W) x 5.2"(H)

Galway : Giftware

Erne Giftware

G32062

Erne 12" Vase *
6"(D) x 12"(H)



G32060

Erne 6.5" Bowl *
7"(D) x 6.5"(H)



Galway: Giftware

Erne Colour - Blush

G32066

Erne 12" Vase Blush *
6"(D) x 12"(H)

G32070

Erne 9.5" Vase Blush *
5"(D) x 9.5"(H)

G32074

Erne 6.5" Bowl Blush *
7"(D) x 6.5"(H)

Erne Colour - Amethyst

G32064

Erne 12" Vase Amethyst *
6"(D) x 12"(H)

G32068

Erne 9.5" Vase Amethyst *
5"(D) x 9.5"(H)

G32072

Erne 6.5" Bowl Amethyst *
7"(D) x 6.5"(H)

Galway: Giftware

Erne Colour - Aqua

G32065

Erne 12" Vase Aqua
6"(D) x 12"(H)

G32069

Erne 9.5" Vase Aqua
5"(D) x 9.5"(H)

G32073

Erne 6.5" Bowl Aqua
7"(D) x 6.5"(H)

Erne Colour - Amber

G32063

Erne 12" Vase Amber *
6"(D) x 12"(H)

G32067

Erne 9.5" Vase Amber *
5"(D) x 9.5"(H)

G32071

Erne 6.5" Bowl Amber *
7"(D) x 6.5"(H)

Galway: Giftware

Coloured Dune

G45023

Emerald Dune 10" Bowl *
10"(W) x 5.2"(H)

G45024

Emerald Dune 12"
Square Vase *
12"(H)

G45025

Emerald Dune 10"
Square Vase *
10"(H)



Coloured Dune



G45018
Amethyst Dune 12"
Square Vase *
12"(H)



G45017
Amethyst Dune
10" Bowl *
10"(W) x 5.2"(H)



G45019
Amethyst Dune
10" Square Vase *
10"(H)



G45027
Sapphire Dune 12"
Square Vase *
12"(H)



G45026
Sapphire Dune
10" Bowl *
10"(W) x 5.2"(H)



G45028
Sapphire Dune 10"
Square Vase *
10"(H)





G24097
Makeup Bell *
5"(H)

G24098
Claddagh Makeup Bell *
5"(H)

Galway : Giftware
Gifts



G40181
Trio Votive
LED Tealights included
5.3"(W) x 2"(H)



G34002
Celtic Cross *
7.5"(W) x 11.4"(H)



G25701
Claddagh Marriage
Blessing 8 Plate *
8"(D)



GSA10
Savoy 4" Perfume
Bottle
4"(H)



GSA11
Savoy Mini Perfume
Bottle
2.5"(H)



GIC42
Mini Square Perfume
Bottle
2.8"(H)

Galway : Giftware

Ashford

This traditional collection is inspired by the medieval "Ashford Castle" located on the Mayo - Galway border. This finely cut collection is linked very closely with medieval times and inspired by the scenery in Ashford.



G57405
Ashford Candlestick - Pair
(Candles not included)
3.2"(W) x 3.9"(H)



G57402
Ashford Salt & Pepper Set
3"(W) x 7.5"(H)



G57406
Ashford Bud Vase
2.4"(W) x 4.5"(H)



G57404
Ashford Trinket Box
3.7"(W) x 3.7"(H)



G23578
Ashford Ringminder
3.6"(D) x 2.5"(H)



G25620

Claddagh 5 x 7 Photo Frame *
6.5"(W) x 8.3"(H)



Galway : Giftware

Frames



G25772

Keenan 5 x 7 Photo Frame
6.5"(W) x 8.4"(H)



G25770

Occasions 5 x 7 Photo Frame *
6.5"(W) x 8.4"(H)



G25617

Happy Anniversary 5 x 7
Photo Frame*
6.5"(W) x 8.3"(H)



G25621

Shamrock 5 x 7 Photo Frame *
6.5"(W) x 8.3"(H)

Galway : Giftware
Figurines



GIC34
Hound Dog (Large)
3.5"(H)



GIC35
Hound Dog (Small)
2"(H)



GIC26
Baby Elephant
2.2"(W) x 3.5"(H)



GIC28
Penguin
2.9"(W) x 2.7"(H)



GIC27
Piglet
1.8"(W) x 1.9"(H)



GIC31
Dachshund Dog
1.9"(W) x 2.7"(H)



Galway : Giftware
Figurines



GIC12
Cat Standing
4.5"(H)



GIC36
Owl (Small)
2"(H)



GIC15
Dolphin Small
2.2"(L) x 4.5"(H)



GIC29
Love Bear - Pink
1.6"(W) x 2.6"(H)



GIC17
Swan Family
3.8"(H)



GIC30
Love Bear - Blue
1.6"(W) x 2.6"(H)





Material: 100% PU Animal Friendly
(Vegan Leather)

All Wallets & Mini Crossbody Bags have RFID blocking liner - RFID blocking lining (security prevents credit / debit cards, phones etc, from being compromised)

All bags are supplied with a fabric gift bag

G&C

Galway : Fashion

New Handbags



GTX96
Mini Shoulder Bag - Black
Croc Detail
8.7"(L) x 3.5"(W) x 5.9"(H)



GTX97
Saddle Bag - Black
Croc Detail
9.4"(L) x 3.9"(W) x 7.9"(H)



GTX98
XL Tote - Black
Croc Detail
16.5"(L) x 6.3"(W) x 11.8"(H)



GTX102
Mini Shoulder Bag - Light
Taupe Croc Detail
8.7"(L) x 3.5"(W) x 5.9"(H)



GTX103
Saddle Bag - Light Taupe
Croc Detail
9.4"(L) x 3.9"(W) x 7.9"(H)



GTX104
XL Tote - Light Taupe
Croc Detail
16.5"(L) x 6.3"(W) x 11.8"(H)

NEW



NEW



Galway : Fashion

New Handbags



GTX99
Mini Shoulder Bag - Tan
Croc Detail
8.7"(L) x 3.5"(W) x 5.9"(H)



GTX100
Saddle Bag - Tan
Croc Detail
9.4"(L) x 3.9"(W) x 7.9"(H)



GTX101
XL Tote - Tan Croc Detail
16.5"(L) x 6.3"(W) x 11.8"(H)



GTX105
Mini Shoulder Bag - Forest
Green Croc Detail
8.7"(L) x 3.5"(W) x 5.9"(H)



GTX106
Saddle Bag - Forest
Green Croc Detail
9.4"(L) x 3.9"(W) x 7.9"(H)



GTX107
XL Tote - Forest Green
Croc Detail
16.5"(L) x 6.3"(W) x 11.8"(H)

Galway : Fashion

New Handbags



GTX114
Mini Shoulder Bag - Pink
8.7"(L) x 3.5"(W) x 5.9"(H)



GTX115
Saddle Bag - Pink
9.4"(L) x 3.9"(W) x 7.9"(H)



GTX116
XL Tote - Pink
16.5"(L) x 6.3"(W) x 11.8"(H)



GTX108
Mini Shoulder Bag -
Vermilion
8.7"(L) x 3.5"(W) x 5.9"(H)



GTX109
Saddle Bag - Vermilion
9.4"(L) x 3.9"(W) x 7.9"(H)



GTX110
XL Tote - Vermilion
16.5"(L) x 6.3"(W) x 11.8"(H)



GTX111
Mini Shoulder Bag - Cloud
Grey 8.7"(L) x 3.5"(W) x 5.9"(H)



GTX112
Saddle Bag - Cloud Grey
9.4"(L) x 3.9"(W) x 7.9"(H)



GTX113
XL Tote - Cloud Grey
16.5"(L) x 6.3"(W) x 11.8"(H)

NEW



NEW

Galway : Fashion

New Canvas Handbags



GTX117
XL Tote Sand Canvas
16.5"(L) x 6.3"(W) x 11.8"(H)



GTX118
XL Tote Oat Canvas
16.5"(L) x 6.3"(W) x 11.8"(H)



GTX119
XL Tote Mauve Taupe
Canvas
16.5"(L) x 6.3"(W) x 11.8"(H)



GTX120
Medium Tote Sand Canvas
11.8"(L) x 5.5"(W) x 8.3"(H)



GTX121
Medium Tote Oat Canvas
11.8"(L) x 5.5"(W) x 8.3"(H)



GTX122
Medium Tote Mauve
Taupe Canvas
11.8"(L) x 5.5"(W) x 8.3"(H)

Galway : Fashion

New Mens & Ladies Wallets



GTX141
Black Book Wallet
4.1"(W) x 7.4"(H)
Material: 100% PU Animal Friendly (Vegan Leather)
12 x card slots 4x internal bill fold open pockets



GTX142
Brown Bifold Wallet
4.1"(W) x 3.7"(H)
Material: 100% PU Animal Friendly (Vegan Leather)
4 x Card Slots 1 x internal bill fold open pocket
1 x Internal Buttoned pocket 2 x Internal pockets



GTX143
Black Bifold Wallet
4.1"(W) x 3.7"(H)
Vegan Leather
4 x Card Slots 1 x internal bill fold open pocket
1 x Internal Buttoned pocket 2 x Internal pockets



GTX144
Brown Leather Card Holder Wallet
2.6"(W) x 3.7"(H)
Genuine Leather
5 x Card Slots in Alluminum Case 2 x Side Slots & 1 Cash Slot



GTX145
Black Leather Card Holder Wallet
2.6"(W) x 3.7"(H)
Genuine Leather
5 x Card Slots in Alluminum Case 2 x Side Slots & 1 Cash Slot



GTX146
Black Ladies Zip Wallet
5.9"(W) x 3.5"(H)



GTX147
Grey Ladies Zip Wallet
5.9"(W) x 3.5"(H)



GTX148
Navy Ladies Zip Wallet
5.9"(W) x 3.5"(H)



GTX149
Taupe Ladies Zip Wallet
5.9"(W) x 3.5"(H)

NEW Ladies Wallet Details Material: 100% PU Animal Friendly (Vegan Leather) Dimensions: 3.5" x 5.9"
7 x card slots 1 x internal bill fold open pockets 1 x internal zipped pocket Branded GIC Lining Lidded Gift Box



Galway : Fashion
Handbags



GTX29
Large Tote Bag - Navy
15"(L) x 4.7"(W) x 11"(H)



GTX31
Crossbody Bag - Navy
9.4"(L) x 3.3"(W) x 5.3"(H)



GTX30
Shoulder Bag - Navy
9.8"(L) x 4.7"(W) x 10.8"(H)



GTX45
Large Top Handle
Handbag - Navy
11"(L) x 4.7"(W) x 13.4"(H)



GTX51
Wallet - Navy
8.1"(L) x 1"(W) x 4.1"(H)



GTX53
Mini Crossbody Bag -
Navy
4.1"(L) x 2.4"(W) x 7.9"(H)

Galway : Fashion
Handbags



GTX93
Large Tote Bag - Mulberry
15"(L) x 4.7"(W) x 11"(H)



GTX94
Shoulder Bag - Mulberry
9.8"(L) x 4.7"(W) x 10.8"(H)



GTX95
Crossbody Bag - Mulberry
9.4"(L) x 3.3"(W) x 5.3"(H)





Galway : Fashion
Handbags



GTX35
Large Two Tone Tote Bag -
Green /Brown
15"(L) x 4.7"(W) x 11"(H)



GTX37
Two Tone Crossbody
Bag - Green / Brown
9.4"(L) x 3.3"(W) x 5.3"(H)



GTX36
Two Tone Shoulder Bag -
Green / Brown
9.8"(L) x 4.7"(W) x 10.8"(H)



GTX55
Mini Crossbody Bag -
Green
4.1"(L) x 2.4"(W) x 7.9"(H)



GTX52
Wallet - Green
8.1"(L) x 1"(W) x 4.1"(H)

Galway : Fashion

Handbags



GTX32
Large Two Tone Tote Bag
- Navy/Brown
15"(L) x 4.7"(W) x 11"(H)



GTX34
Two Tone Crossbody Bag
- Navy / Brown
9.4"(L) x 3.3"(W) x 5.3"(H)



GTX33
Two Tone Shoulder Bag -
Navy / Brown
9.8"(L) x 4.7"(W) x 10.8"(H)



GTX38
Large Two Tone Tote Bag
- Tan / Brown
15"(L) x 4.7"(W) x 11"(H)



GTX40
Two Tone Crossbody Bag
- Tan / Brown
9.4"(L) x 3.3"(W) x 5.3"(H)



GTX39
Two Tone Shoulder Bag -
Tan / Brown
9.8"(L) x 4.7"(W) x 10.8"(H)





Galway : Fashion
Handbags



GTX78
Mini Crossbody Bag -
Dusky Pink
4.1"(L) x 2.4"(W) x 7.9"(H)

GTX79
Mini Crossbody Bag -
Biscuit
4.1"(L) x 2.4"(W) x 7.9"(H)

GTX80
Mini Crossbody Bag -
Rust
4.1"(L) x 2.4"(W) x 7.9"(H)



GTX81
Mini Crossbody Bag -
Mulberry
4.1"(L) x 2.4"(W) x 7.9"(H)

GTX82
Mini Crossbody Bag -
Rose Pink
4.1"(L) x 2.4"(W) x 7.9"(H)

GTX83
Mini Crossbody Bag -
Mustard
4.1"(L) x 2.4"(W) x 7.9"(H)

Galway : Fashion
Handbags



GTX84
Mini Crossbody Bag -
Light Blue
4.1"(L) x 2.4"(W) x 7.9"(H)



GTX85
Mini Crossbody Bag -
Cerise
4.1"(L) x 2.4"(W) x 7.9"(H)



GTX86
Mini Crossbody Bag -
Tangerine
4.1"(L) x 2.4"(W) x 7.9"(H)



GTX87
Mini Crossbody Bag -
Orange
4.1"(L) x 2.4"(W) x 7.9"(H)



GTX88
Mini Crossbody Bag -
Yellow
4.1"(L) x 2.4"(W) x 7.9"(H)



GTX89
Mini Crossbody Bag -
Dove Grey
4.1"(L) x 2.4"(W) x 7.9"(H)





Galway : Fashion
Handbags



GTX48
 Top Handle Handbag - White
 11"(L) x 4.7"(W) x 13.4"(H)



GTX46
 Top Handle Handbag - Red
 11"(L) x 4.7"(W) x 13.4"(H)



GTX47
 Top Handle Handbag - Black
 11"(L) x 4.7"(W) x 13.4"(H)



GTX77
 Mini Crossbody Bag - White
 4.1"(L) x 2.4"(W) x 7.9"(H)



GTX50
 Wallet - White
 8.1"(L) x 1"(W) x 4.1"(H)



GTX56
 Mini Crossbody Bag - Red
 4.1"(L) x 2.4"(W) x 7.9"(H)



GTX49
 Wallet - Red
 8.1"(L) x 1"(W) x 4.1"(H)



CLEVER DETAILS ON NEW

What sets this collection apart are the clever details that have been incorporated into the design of each bag.

For example, the bags feature detachable straps that allow for multiple carrying options, as well as detachable tassel zip pulls that add a playful element to the design.

Additionally, the exterior pocket of the XL tote is equipped with RFID protection, providing added security for your personal belongings. The XL tote features a covered key lanyard, to easily find your keys and protect valuables from damage inside your bag.



Branded GIC Lining - All bags



Detachable Tassels XL tote, Medium Tote, Shoulder Bag



Key Lanyard with protective cover - XL tote



Exterior Pocket with RFID protection. XL Tote



New XL Tote

- Branded Lining
- External Pocket with RFID protection
- Key lanyard with protective cover
- 2 x interior zipped pockets
- Detachable tassel zipper pull
- Detachable Crossbody Strap
- Gold Hardware
- Vegan Leather / Canvas
- 16.5"L x 6.3"W x 11.8"H
- Strap: Crossbody - detachable and adjustable - max length 23.6"
- Material: Vegan textured Leather / Croc Detail Vegan
- Leather / 16 oz Cotton Canvas

New Saddle Bag

- Branded Lining
- Detachable Shoulder Strap drop length 9.8"
- Detachable Crossbody Strap
- X1 interior zipped pocket
- Gold Hardware
- 8.7"L x 3.5"W x 5.9"H
- Crossbody Strap: Adjustable, Max drop length 22.8"
- Material: Vegan textured leather / Croc Detail
- Vegan Leather (Specific to each Bag)

Crossbody Bag

- Strap 55cm shoulder length adjustable
- Detachable loop handle
- Zip pocket
- Open pocket for smartphone
- Detachable leather strap

New Medium Tote

- Branded Lining
- 2 x interior zipped pockets
- Detachable tassel zipper pull
- Strap: Crossbody - detachable and adjustable max length 23.6"
- Gold Hardware
- Vegan Leather / Canvas
- 11.8"L x 5.5"W x 8.3"H
- Material: 16oz Cotton Canvas

New Mini Shoulder Bag

- Branded Lining
- 1 x interior zipped pocket
- Gold Hardware
- 8.7"L x 3.5"W x 5.9"H
- Strap: Drop length 8.7"
- Material : Vegan textured Leather / Croc Detail Vegan
- Leather / 16 oz Cotton Canvas (Specific to each Bag)

Top Handle Bag

- Detachable and adjustable leather strap
- Top zip closure
- 2 x zip interior pockets
- 2 x open interior pockets



Tote Bag

- Strap 28.5cm shoulder length
- 2 x zip interior pockets
- 2 x open interior pockets
- 1 x detachable inner bag
- 1 x pocket size for smartphone.
- Button closure

Mini Crossbody Bag

- Detachable & adjustable crossover leather strap
- 4 x interior card slots
- Fold over magnetic top closure
- RFID security lining

Wallet

- 12 x card slots
- RFID blocking lining (security that prevents credit / debit cards, phones etc, from being compromised)
- 2 x internal bill fold open pockets
- 1 x internal zipped pocket
- Detachable carry handle
- Sized to fit a smartphone

Shoulder Bag

- (Strap 50cm shoulder length, adjustable)
- 2 x Zip interior pockets
- 2 x open interior pockets
- 1 x Adjustable and detachable crossbody leather strap

Scarves

"Our stunning Merino Wool & Polyester Scarves are rich in colour and will certainly draw attention and compliment any outfit. These rich and comfortable scarves are a must have and also comes in a beautiful box ready for gifting."

MERINO:

Material: Merino Wool

Dimensions: 25.6" x 70.9"

Additional information: Presented in a Lidded Gift Box

Wash Instructions: Hand-wash only do not place in tumble dryer

POLYESTER:

Material: Polyester

Dimensions: 30.7" x 70.1"

Additional information: Presented in a window gift box

Wash Instructions: Hand-wash only do not place in tumble dryer



NEW



Galway : Fashion

New Polyester Scarves



GTX150
Orange & Turquoise
Scarf 30.7"(W) x 70.1"(L)



GTX151
Sage & Apple
Blossom Scarf
30.7"(W) x 70.1"(L)



GTX152
Tropical Birds Scarf
30.7"(W) x 70.1"(L)



GTX153
Red Lilies Scarf
30.7"(W) x 70.1"(L)



GTX154
Mulberry Blossom Scarf
30.7"(W) x 70.1"(L)

Galway : Fashion

Merino Wool Scarves



GTX66
Pink Blossom Scarf
27.6"(W) x 76.8"(L)



GTX67
Lily Pads Scarf
27.6"(W) x 76.8"(L)



GTX21
Dusk Pink & Orange
Scarf
27.6"(W) x 76.8"(L)



GTX20
Atlantic Blue Scarf
27.6"(W) x 76.8"(L)



GTX19
Olive & Stone Scarf
27.6"(W) x 76.8"(L)





Galway : Fashion

Merino Wool Scarves



GTX64
Sea Mist Stripe Scarf
27.6"(W) x 76.8"(L)



GTX62
Crimson, Merrigold &
Navy Scarf
27.6"(W) x 76.8"(L)



GTX63
Red & White Jasmine
Flower Scarf
27.6"(W) x 76.8"(L)



GTX65
Bright Pastels Scarf
27.6"(W) x 76.8"(L)

Galway : Homeware

Throws

All throws are presented with a ribbon and tied bow with branded information card. Shipped in removable clear dust cover.

RPET fabric or Recycled Polyethylene Terephthalate is a new reusable and sustainable material. Used in GTX14, GTX75 & GTX76 herringbone throws. 85% less energy is required. 65% fewer emissions: 50-65% less Carbon and Sulphur Dioxide released. 90% less water required.



GTX73
Pearl Champagne Throw
59"(W) x 74.8"(L)



GTX74
Pearl Sage Throw
59"(W) x 74.8"(L)



GTX75
Herringbone Forest Green Throw
(RPET)
59"(W) x 74.8"(L)



GTX76
Herringbone Atlantic Blue Throw
(RPET)
59"(W) x 74.8"(L)

GTX14
Herringbone Dark Grey Throw
(RPET)
57.1"(W) x 72.8"(L)





Galway : Homeware

Throws



GTX15
Aran Knit Soft White Throw
57.1"(W) x 76.8"(L)



GTX16
Aran Knit Cool Grey Throw
57.1"(W) x 76.8"(L)



GTX17
Aran Knit Warm Grey Throw
57.1"(W) x 76.8"(L)



GTX18
Pearl Grey Throw
59"(W) x 74.8"(L)

GALWAY
CRYSTAL

**Irish
Hallmarked
Sterling
Silver
Jewellery**



GALWAY

Irish Hallmarked Sterling Silver Jewellery

Galway Irish Crystal is proud to present our exciting collection of Irish Hallmarked Sterling Silver Jewellery.

Taking inspiration from Galway City, both vibrant and historic this collection of beautiful Sterling Silver Jewellery is effortlessly stylish and contemporary, whilst standing the test of time as true heirloom pieces.

Looking to timeless Celtic motifs like the Claddagh, Trinity Knot and Tree of Life and re-imagining them with contemporary elements - like incorporated cut crystal gems, rose gold and gold plating and stacking rings to name a few. Our Sterling Silver Jewellery encompasses the values of quality, design and craftsmanship long associated with Galway Irish Crystal.

Story of the Claddagh

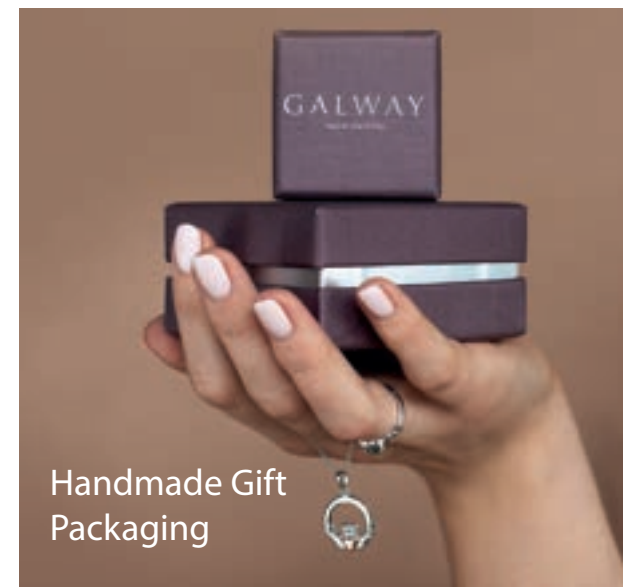
The timeless Claddagh symbol has held a special place in Irish folklore and tradition for generations. The first claddagh ring is believed to have been designed at some time during the 16th Century in the fishing village of the Claddagh, now part of Galway City. Claddagh Rings are infused with symbolism and meaning.

The Heart symbolises Love

The Crown represents Loyalty

The Hands are a symbol of friendship

- All Silver products are Rhodium plated
- Chain lengths for pendants are 18" adjustable to 16"
- Hallmarked in Ireland - Dublin Assay Office
- Shipped directly from Ireland
- Rings sized to US sizes
- Presented in branded handmade gift packaging



Handmade Gift Packaging

International Conversion Chart

Womens Available Ring Sizes

United States & Canada	Europe	UK, Australia & South Africa	Diameter (mm)
6	47	W6	14.87
6.5	48	W6.5	15.29
7	49	W7	15.71
7.5	N/A	W7.5	16.1
8	52	L1	16.52
8.5	53	W8	16.94
9	54	W9	17.3
9.5	N/A	Q1	17.7
10	57	P1	18.12
10.5	N/A	W10	18.5
11	61	P1.5	19.0
11.5	N/A	Q1.5	19.4
12	64	R	19.8

International Conversion Chart

Mens Available Ring Sizes

United States & Canada	Europe	UK, Australia & South Africa	Diameter (mm)
6	52	L1	16.52
7	54	N1	17.3
7.5	N/A	Q1	17.7
8	57	P1	18.12
8.5	58	Q1.5	18.47
9	N/A	R1	19.0
9.5	61	S1	19.4
10.5	65	U1	20.06
11.5	68	W1	21.02
12.5	68	Z	21.66
13.5	71	Z+2	22.61

(Our Sizes)

How to Wear Your Claddagh Ring

Left Hand



Heart Facing Inwards
Meaning: Married



Heart Facing Outwards
Meaning: Engaged

Right Hand



Heart Facing Inwards
Meaning: In a Relationship



Heart Facing Outwards
Meaning: Single

GALWAY IRISH CRYSTAL Irish Hallmarks



Assay Office Mark



Makers Mark



Metal & Fineness Mark

Contents

New Jewellery	123 - 126
Claddagh Jewellery	127 - 128
Pendants	129
Trinity & Celtic Knot	130
Green Crystals	131
New Fashion Jewellery	132 - 141

Galway : Sterling Silver Jewellery

New Heart of the Claddagh

Inspired by the timeless Claddagh symbol, we've reimagined its iconic heart motif to create a stunning and modern line of Jewellery. Each piece in this collection captures the essence of love, loyalty and friendship blending classic symbolism with a fresh, fashionable twist. Crafted with meticulous attention to detail our "Heart of the Claddagh" pieces are a perfect blend of heritage and innovation.



G60
Heart of the
Claddagh Silver &
Gold Ring
(13 Sizes Available)



G6001
Heart of the
Claddagh Silver &
Gold Pendant



G6002
Heart of the
Claddagh Silver &
Gold Earrings



G6003
Heart of the
Claddagh Silver &
Gold Bracelet



G61
Heart of the
Claddagh Silver &
Rose Gold Ring
(13 Sizes Available)



G6004
Heart of the
Claddagh Silver &
Rose Gold
Pendant



G6005
Heart of the
Claddagh Silver &
Rose Gold Earrings



G6006
Heart of the
Claddagh Silver &
Rose Gold Bracelet

NEW



NEW

Galway : Sterling Silver Jewellery

New Pendants



G8110
Tree of Life Pendant
Silver & Gold



G8111
Tree of Life Pendant
Silver & Rose Gold



G8112
Celtic Cross Pendant



G8115
Hearts &
Shamrocks
Pendant Silver &
Gold



G8116
Hearts &
Shamrocks
Pendant Silver &
Rose Gold



G8113
St Bridget's Cross
Pendant



G8114
Shamrock
Pendant

Galway : Sterling Silver Jewellery

New Bangles



G7102
Claddagh Silver Bangle



G7302
Claddagh Silver & Gold Bangle



G7402
Claddagh Silver & Rose Gold
Bangle



G7602
Trinity Knots & Shamrocks Rose
Gold & Silver Bangle



NEW



Galway : Sterling Silver Jewellery

New Cufflinks



G7103
Cufflinks - Claddagh



G8118
Cufflinks - Tree of Life



G8119
Cufflinks - Shamrock



G8117
Cufflinks - Celtic Knot

Galway : Sterling Silver Jewellery

Claddagh - Gold & Rose Gold



G73
Three Part Claddagh
Silver & Gold Ring
(13 Sizes Available)



G7300
Claddagh Silver &
Gold Pendant



G7301
Claddagh Silver &
Gold Earrings



G74
Three Part Claddagh
Silver & Rose Gold Ring
(13 Sizes Available)



G7400
Claddagh Silver &
Rose Gold Pendant



G7401
Claddagh Silver &
Rose Gold Earrings



Galway : Sterling Silver Jewellery

Claddagh Silver Jewellery



G71
Ladies Claddagh Ring
(13 Sizes Available)



G7100
Claddagh Pendant



G7101
Claddagh Earrings



G75
Crystal Claddagh Bezel
Setting Ring
(13 Sizes Available)



G7500
Crystal Claddagh
Pendant



G7501
Crystal Claddagh
Earrings



G76
Crystal Claddagh Ring
(13 Sizes Available)



G72
Gents Claddagh Ring
(11 Sizes Available)

Galway : Sterling Silver Jewellery

Sterling Silver Jewellery - Pendants



G8104
Tree of Life Green
Crystal Pendant



G8105
Crystal Tree of Life
Pendant



G8106
Tree of Life
Pendant - Small



G8103
Celtic Swirl Pendant



G8107
Harp Pendant





Galway : Sterling Silver Jewellery

Trinity Knot & Celtic Knot



G79
Trinity Knots &
Shamrocks Rose
Gold & Silver Ring
(13 Sizes Available)



G7900
Trinity Knots &
Shamrocks Rose Gold &
Silver Pendant



G8002
Trinity Knot Earrings



G8101
Celtic Knot Pendant



G8102
Celtic Knot Earrings

Galway : Sterling Silver Jewellery

Claddagh - Green Crystals



G77
Green Crystal
Claddagh Ring
(13 Sizes Available)



G7700
Green Crystal
Claddagh Pendant



G7701
Green Crystal
Claddagh Earrings



G8108
Shamrock Green
Crystal Pendant



G8109
Shamrock Green
Crystal Earrings



NEW

Contemporary Sterling Silver Jewellery

Discover the Galway Crystal Contemporary Sterling Silver Jewellery Collection, a captivating blend of modern elegance and Galway City's vibrant culture.

Each piece in this exquisite collection embodies the city's dynamic spirit, uniting sterling silver craftsmanship with geometric shapes and the allure of gold and rose gold accents, all proudly hallmarked in Dublin Castle.

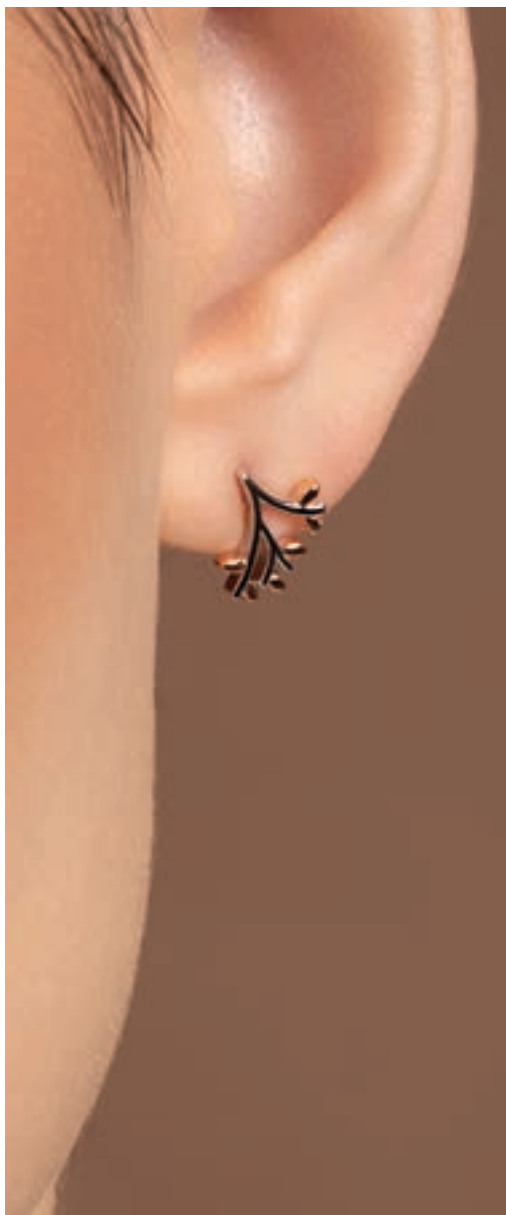
From sleek, contemporary designs that nod to Galway's Celtic heritage, these meticulously crafted pieces of Sterling Silver are a tangible reflection of the city's eclectic character, allowing you to wear Galway's soul with pride wherever your adventures take you.



Galway : Sterling Silver Jewellery

New Fashion Jewellery - Wildwood

NEW



G9002
Wildwood Sterling Silver
& Gold Stud Earrings



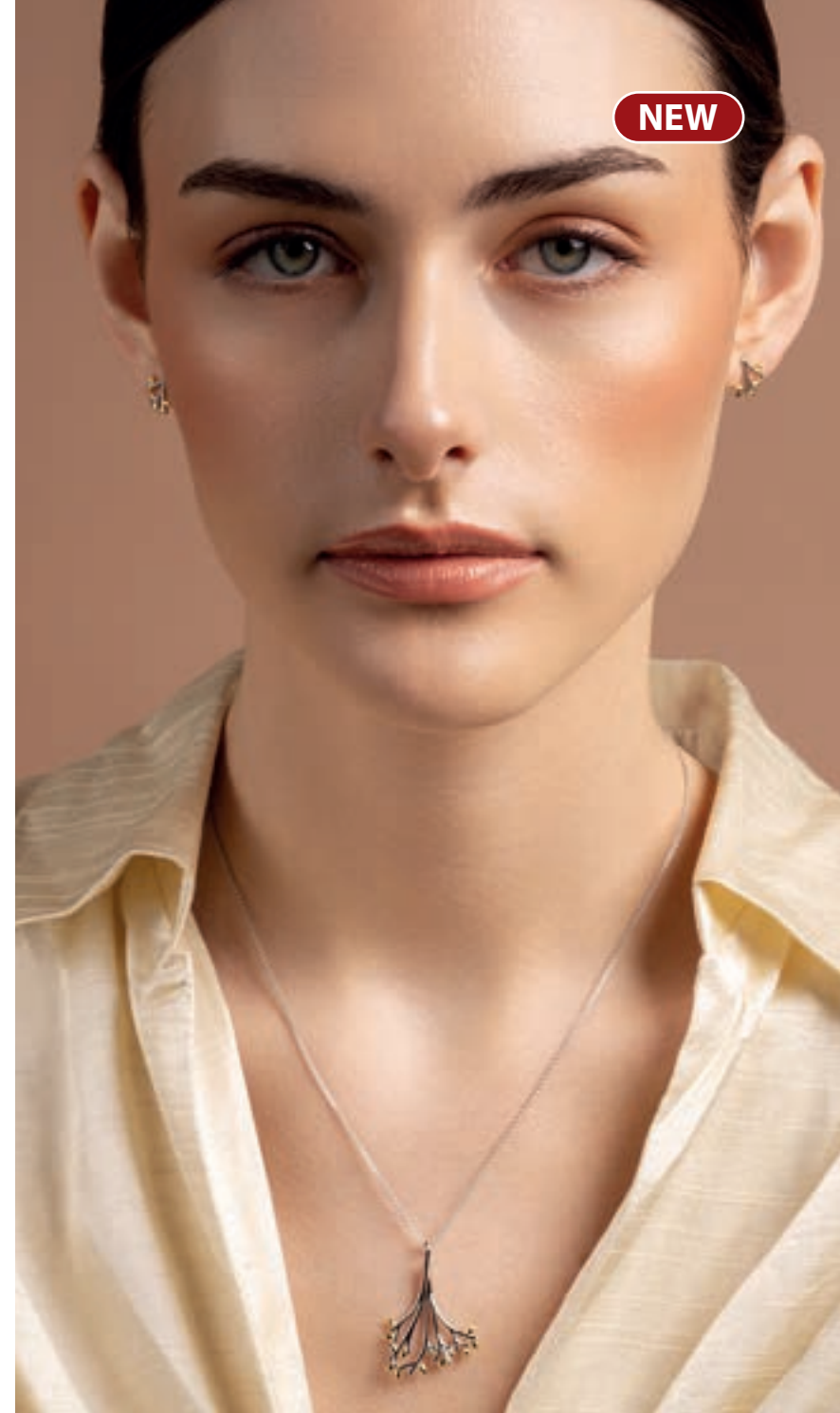
G9000
Wildwood Sterling
Silver & Gold
Pendant



G9003
Wildwood Sterling Silver
& Rose Gold Earrings



G9001
Wildwood Sterling
Silver & Rose Gold
Pendant



NEW



Galway : Sterling Silver Jewellery

New Fashion Jewellery - Entwined



G9004
Entwined Sterling Silver & Gold
Pendant



G9006
Entwined Sterling Silver & Gold
Stud Earrings



G9007
Entwined Sterling Silver & Rose
Gold Earrings



G9005
Entwined Sterling Silver & Rose
Gold Pendant

Galway : Sterling Silver Jewellery

New Fashion Jewellery - Arc



G9008
Arc Sterling Silver & Gold
Pendant



G9010
Arc Sterling Silver & Gold Stud
Earrings



G9011
Arc Sterling Silver & Rose Gold
Stud Earrings



G9009
Arc Sterling Silver & Rose Gold
Pendant



NEW

Galway : Sterling Silver Jewellery

New Fashion Jewellery - Luna



G9012
Luna Sterling Silver
& Gold Pendant



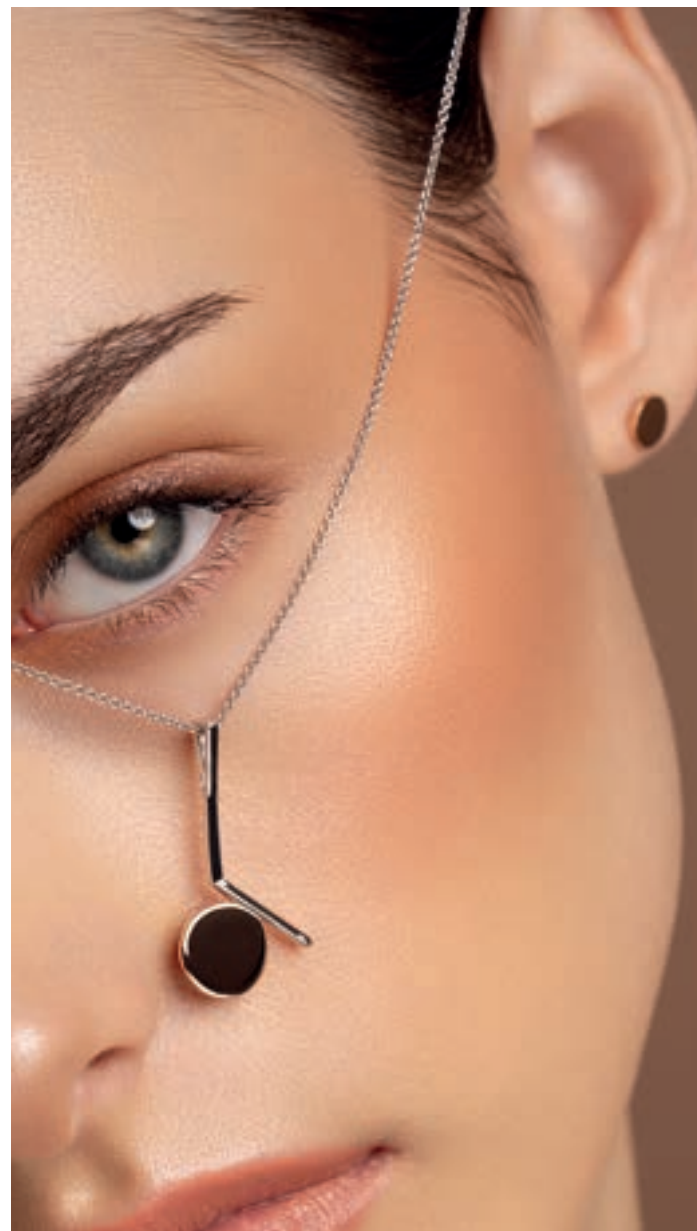
G9014
Luna Sterling Silver &
Gold Stud Earrings



G9013
Luna Sterling Silver
& Rose Gold
Pendant



G9015
Luna Sterling Silver
& Rose Gold
Earrings



Galway : Sterling Silver Jewellery

New Fashion Jewellery - Orbit



G9018
Orbit Sterling Silver &
Gold Pendant



G9019
Orbit Sterling Silver
& Rose Gold Pendant

NEW





NEW

Galway : Sterling Silver Jewellery

New Fashion Jewellery - Pearl Hoop



G9016
Pearl Hoop Sterling
Silver & Gold Pendant



G9017
Pearl Hoop Sterling
Silver & Rose Gold
Pendant



Galway : Sterling Silver Jewellery

New Fashion Jewellery - Balance



G9020
Balance Sterling Silver
Loop Through Necklace



G9021
Balance Sterling Silver &
Gold Loop Through
Necklace



G9022
Balance Sterling Silver &
Rose Gold Loop Through
Necklace



G9023
Balance Sterling Silver
Stud Earrings

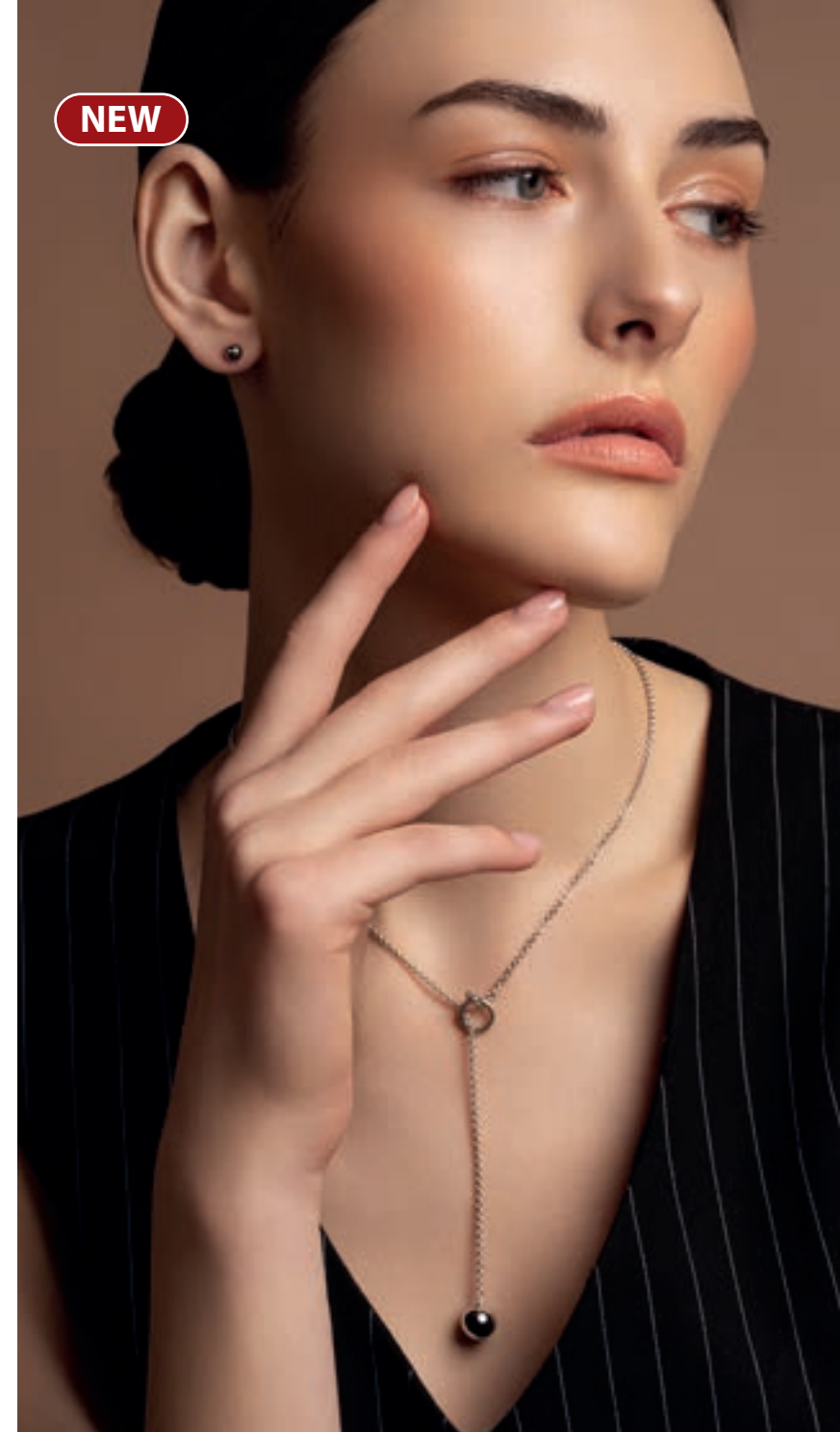


G9024
Balance Sterling Silver &
Gold Stud Earrings



G9025
Balance Sterling Silver &
Rose Gold Stud Earrings

NEW



NEW

Galway : Sterling Silver Jewellery

New Fashion Jewellery - Dual Tone



G9026
Dual Tone Bar
Sterling Silver &
Gold Pendant



G9028
Dual Tone Bar
Sterling Silver & Gold
Stud Earrings



G9027
Dual Tone Bar
Sterling Silver &
Rose Gold Pendant



G9029
Dual Tone Bar
Sterling Silver & Rose
Gold Stud Earrings



Galway : Sterling Silver Jewellery

New Fashion Jewellery - Plain Bar

NEW



G9030
Plain Bar Sterling Silver
Pendant



G9031
Plain Bar Sterling Silver &
Gold Pendant



G9032
Plain Bar Sterling Silver &
Rose Gold Pendant



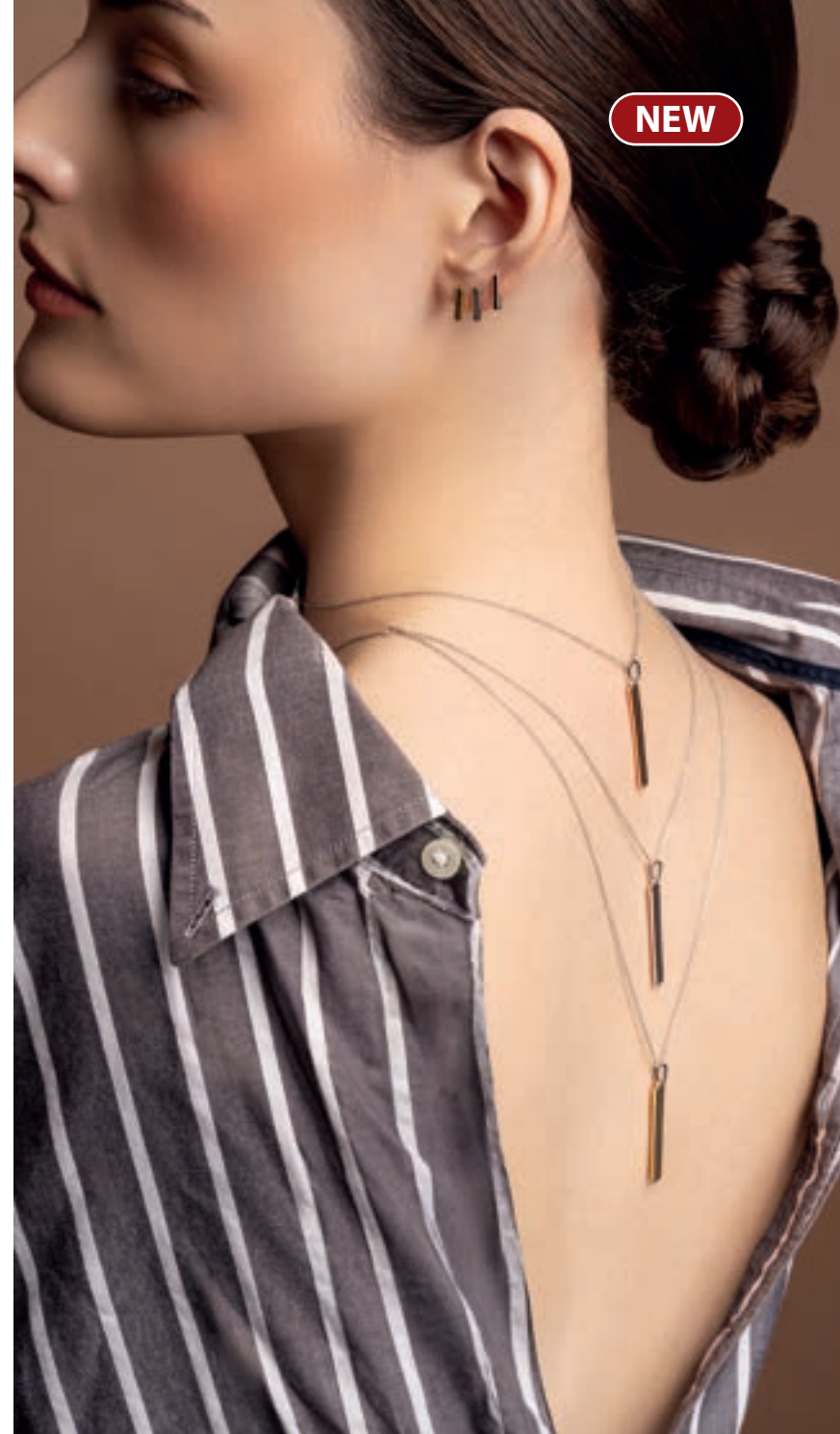
G9033
Plain Bar Sterling Silver
Stud Earrings



G9034
Plain Bar Sterling Silver &
Gold Stud Earrings



G9035
Plain Bar Sterling Silver &
Rose Gold Stud Earrings



GALWAY
CRYSTAL

**Irish
Hallmarked
Sterling
Silver
Jewellery**



Galway Crystal

Personalised

G45026E

Sapphire Dune 10" Bowl *

G45027E

Sapphire Dune 12" Vase *

G45028E

Sapphire Dune 10" Vase *





G900012E Elegance Red Wine (Pair) *

Galway Crystal

Personalised

Engraving is a great way to personalise your piece of Galway Crystal. Whether it's for a prize giving, a wedding, or simply a thank you, personalising with names, dates, family heraldry or an image of special places or faces, will make your piece even more personal.

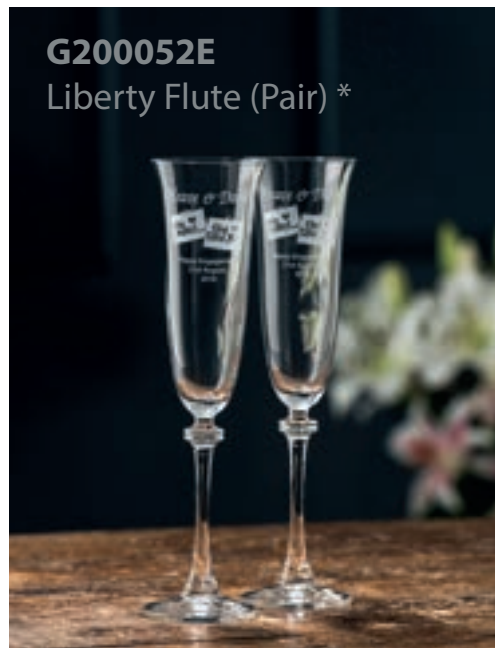
From champagne flutes to sporting trophies our engraving team can create artwork which will enhance and compliment, for that touching reminder of that very special occasion.

All items throughout the catalogue marked with an * can be engraved with your own personal message.

If you would like to discuss an engraving order with us, call the customer services line on the reverse of this catalogue and we will be happy to talk you through the engraving process.



G600152E
Gin & Tonic - Lemon &
Lime (Pair) *



G200052E
Liberty Flute (Pair) *



G25770E
Occasions 5 x 7 Frame *



G60010E
Tall Carafe *
G900012E
Elegance Red
Wine *

Galway Crystal

Personalised

Weddings

Engraving is especially popular with weddings, to mark the date on Champagne Flutes for the Bridal toast, a item for a gift or for wedding favours.

Clubs / Sporting

Does your club have its own logo? We can use this on your prizes, or if not we can use a symbol specific to your club activity.

Heraldry

We have a vast database of Irish Coat of Arms, very popular for anniversaries and weddings. If your coat of arms is not one of Irish origin, simply supply a copy.

Corporate

For long service awards or sponsor pieces, engraving with your company logo will ensure the prominence of your corporate image.

Time Frame

Please allow approximately 8 - 12 weeks for each order to be completed. Depending on the size of the order and detail involved, engraving may require more lead time. Rush orders can be accommodated.

G45012E

Dune 12" Square Vase *

G45010E

Dune 10" Square Vase *



GWS02E

Renmore Whiskey Set
Glasses can be engraved



Galway Crystal: Giftware

Awards & Personalised Gifts

Designed and cut only by the most experienced craftsmen, these prestigious pieces celebrate the highest honour of achievement.



GM1186E

Large Footed Masterpiece Vase *
13"(H)



GM1187E

Medium Footed Masterpiece
Vase *
11.4"(H)

Awards & Personalised Gifts



G25687E
11" Plate *
11"(D)



G25700E
8" Plate*
8"(D)



GDO46E
Deco 8"
Diamond
Award *
10"(H)



GTR01
Trophy Large Round*
8.5"(D) x 9"(H)
Base 5.8"(L) x 2"(H)

GTR03
Trophy Small
Oval*
6.5"(H)
Base 3.3"(L) x 2"(H)

GTR02
Trophy Large Oval*
9"(H)
Base 5.3"(L) x 2"(H)

Galway Crystal: Corporate
Master Collection



GM1009E
Two Piece Punch
Bowl *
15"(H)



GM1180E
18" Inspiration
Trophy *
18"(H)



GM1181E
16" Inspiration
Trophy *
16"(H)



GM1182E
14" Inspiration
Trophy *
14"(H)



GM1122E
17" Footed
Sports Trophy *
17"(H)



GM1121E
13" Footed
Sports Trophy *
13"(H)



GM1120E
10" Footed
Sports Trophy *
10"(H)

Galway Crystal: Corporate

Master Collecton



GM1115E
12" Footed Centre Piece *
12"(H)



GM1167E
Master Trophy - Small *
9"(H)



GM1166E
Master Trophy - Medium *
11"(H)



GM1168E
Master Trophy - Large *
12"(H)



GM1111E
14" Waisted Vase *
14"(H)

GM1152E

Rugby Ball / American Football
Trophy * (includes base)
8.7"(W) at base x 13.4"(H)



Galway Crystal: Corporate Sporting Awards



GM1156E
Gaelic Football 7.5"
Trophy * (includes base)
7.5"(W) x 9.1"(H)



GM1165E
8" Soccer Ball Trophy *
(includes base)
8"(H)



GM1173E
Hurley & Sliothar on
Ash Base *
(includes base)
8.9"(W) x 16.7"(H)



GM1158E
6" Sliothar Trophy *
(includes base)
6"(H)



GM1125E
8" Golf Ball Trophy *
(includes base)
8"(H)